

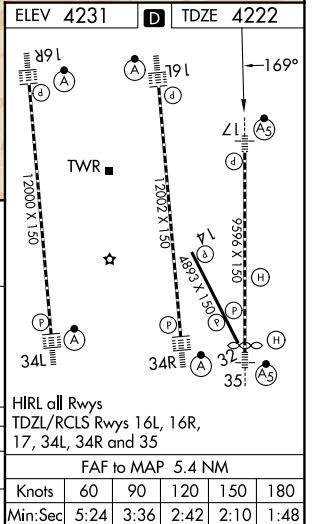
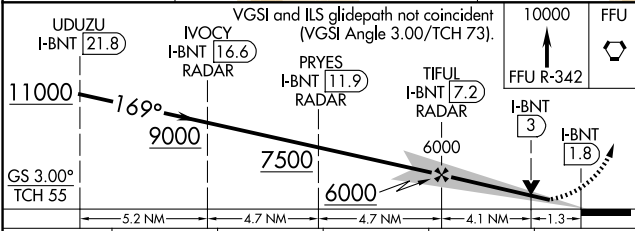
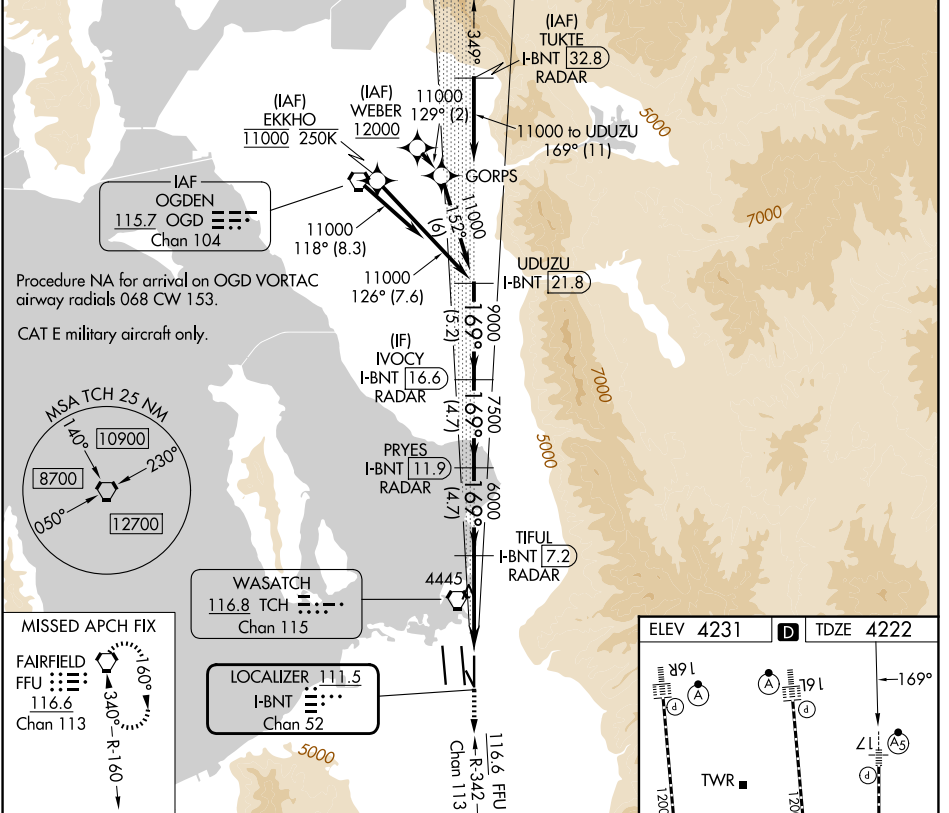
LOC/DME I-BNT 111.5 Chan 52	APP CRS 169°	Rwy Ldg TDZE 9596 4222	Apt Elev 4231
---	------------------------	--	-------------------------

ILS or LOC RWY 17

SALT LAKE CITY INTL (SLC)

RNP APCH-GPS. From WEBER or EKKHO.		MALSR 	MISSED APPROACH: Climb to 10000 on FFU VORTAC R-342 to FFU VORTAC and hold.
DME or RADAR required. RADAR required for procedure entry at TUKTE.			
<p>Simultaneous approach authorized. For inop ALS, increase S-ILS 17 Cat E visibility to RVR 4000, increase S-LOC 17 Cat C/D/E visibility to 1/2 SM.</p>			

D-ATIS 124.75 125.625	SALT LAKE CITY APP CON 125.7 284.6	SALT LAKE CITY TOWER 118.3 257.8	GND CON 121.9 348.6
---------------------------------	--	--	-------------------------------



CATEGORY	A	B	C	D	E
S-ILS 17	4422/18 200 (200-1/2)				
S-LOC 17	4700/24	478 (500-1/2)	4700/50 478 (500-1)		

SW-4, 11 JUN 2026 to 09 JUL 2026

SW-4, 11 JUN 2026 to 09 JUL 2026