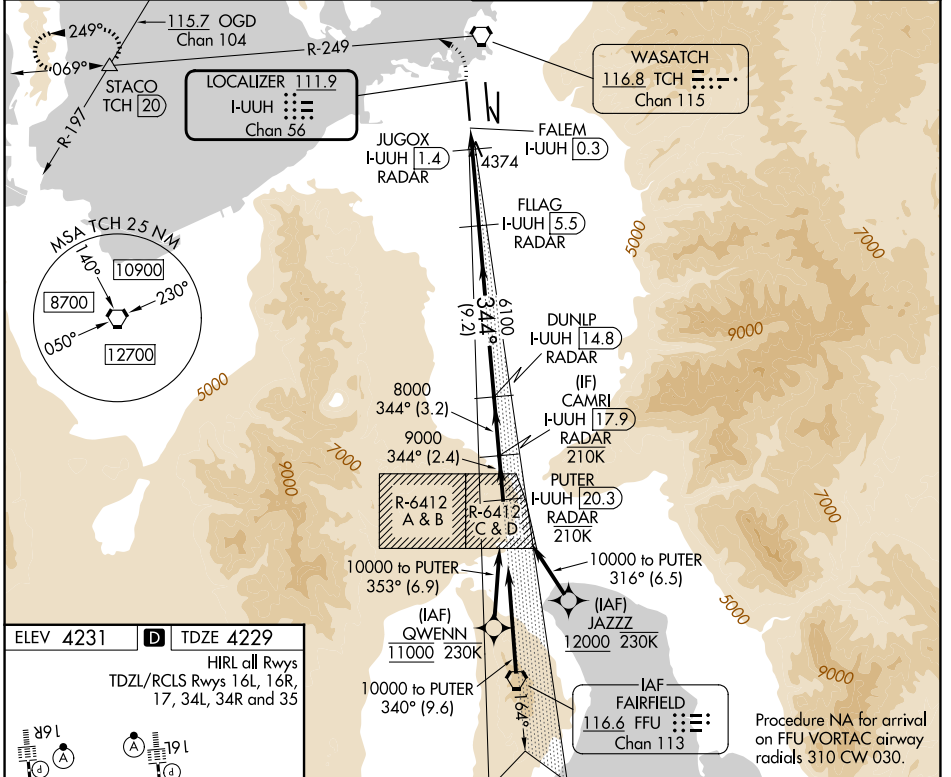


LOC/DME I-UUH <b>111.9</b> Chan 56	APP CRS <b>344°</b>	Rwy Ldg TDZE Apt Elev <b>12000</b> <b>4229</b> <b>4231</b>
--	------------------------	--

# ILS or LOC RWY 34L

SALT LAKE CITY INTL (SLC)

RNP APCH-GPS. From GWENN or JAZZ.		ALSIF-2	MISSED APPROACH: Climb to 4800 then climbing left turn to 8100 on TCH VORTAC R-249 to STACO INT/TCH 20 DME and hold.
DME or RADAR required.		(A)	
Simultaneous approach authorized. For inop ALS, increase S-LOC 34L Cat C/D visibility to RVR 6000.			
D-ATIS <b>124.75 125.625</b>	SALT LAKE CITY APP CON <b>125.7 284.6</b>	SALT LAKE CITY TOWER <b>132.65 336.4</b>	GND CON <b>123.775 348.6</b>



4800	8100	STACO	VGSI and ILS glidepath not coincident (VGSI Angle 3.00/TCH 73).	PUTER
TCH R-249				I-UUH 20.3
I-UUH DME ANTENNA	JUGOX I-UUH 1.4	FLAG I-UUH 5.5	DUNLP I-UUH 14.8	CAMRI I-UUH 17.9
FALEM I-UUH 0.3		6100	8000	9000
	4780	6100		10000
	0.5	1.1 NM	4.1 NM	9.2 NM
CATEGORY	A	B	C	D
S-ILS 34L	4429/18 200 (200-1/2)			
S-LOC 34L	4640/24 411 (500-1/2)		4640/40 411 (500-3/4)	

SW-4, 11 JUN 2026 to 09 JUL 2026

SW-4, 11 JUN 2026 to 09 JUL 2026