

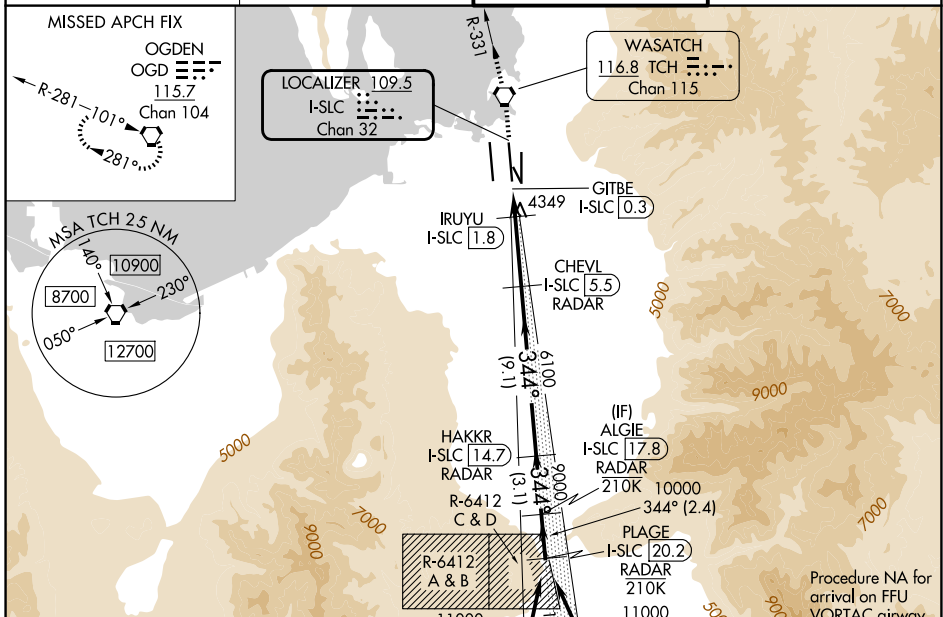
LOC/DME I-SLC 109.5 Chan 32	APP CRS 344°	Rwy Ldg 12002 TDZE 4225 Apt Elev 4231
---	------------------------	--

ILS or LOC RWY 34R

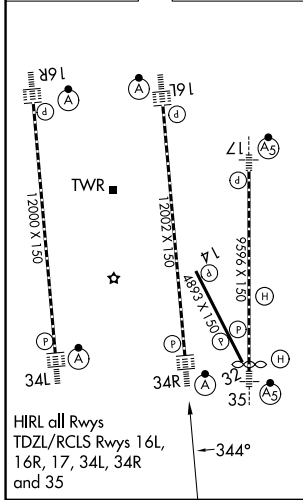
SALT LAKE CITY INTL (SLC)

RNP APCH-GPS. From QWENN or JAZZ.	ALSF-2 	MISSED APPROACH: Climb to 9000 direct TCH VORTAC and on TCH VORTAC R-331 to OGD VORTAC and hold.
DME required for LOC only. DME or RADAR required.		
<p>Simultaneous approach authorized. For inop ALS, increase S-LOC 34R Cat C/D visibility to RVR 5500.</p>		

D-ATIS 124.75 125.625	SALT LAKE CITY APP CON 125.7 284.6	SALT LAKE CITY TOWER 119.05 257.8	GND CON 123.775 348.6
---------------------------------	--	---	---------------------------------



ELEV 4231	D	TDZE 4225
-----------	----------	-----------



9000 TCH	TCH R-331	OGD	VGSI and ILS glidepath not coincident (VGSI Angle 3.00/TCH 73).	PLAGE I-SLC 20.2 RADAR
I-SLC DME ANTENNA	GIBTE I-SLC 0.3	IRUYU I-SLC 1.8	CHEVL I-SLC 5.5 RADAR	HAKKR I-SLC 14.7 RADAR
0.5 NM	1.5 NM	3.8 NM	9.1 NM	3.1 NM
4900	6100	9000	11000	11000
GS 3.00°	TCH 55			

CATEGORY	A	B	C	D
S-ILS 34R		4425/18	200 (200-1/2)	
S-LOC 34R	4600/24	375 (400-1/2)	4600/35	375 (400-5/8)

SW-4, 11 JUN 2026 to 09 JUL 2026

SW-4, 11 JUN 2026 to 09 JUL 2026