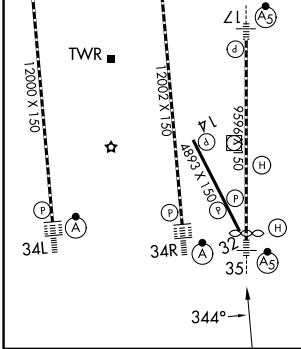
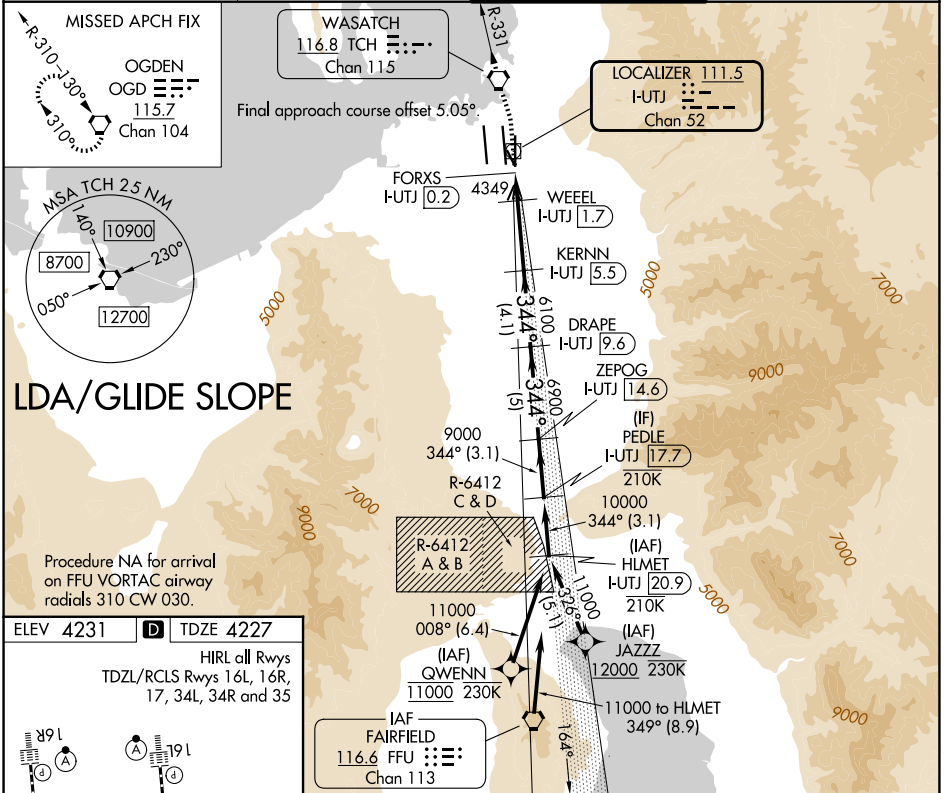


LOC/DME I-UTJ 111.5 Chan 52	APP CRS 344°	Rwy Ldg 9272 TDZE 4227 Apt Elev 4231
---	------------------------	---

LDA RWY 35
SALT LAKE CITY INTL (SLC)

RNP APCH-GPS. From GWENN or JAZZ.	MALS R 	MISSED APPROACH: Climb to 4800 then climbing left turn to 9000 direct TCH VORTAC and on TCH VORTAC R-331 to OGD VORTAC and hold.
DME required. RADAR required for procedure entry at HLMET.		

D-ATIS 124.75 125.625	SALT LAKE CITY APP CON 125.7 284.6	SALT LAKE CITY TOWER 118.3 257.8	GND CON 121.9 348.6
---------------------------------	--	--	-------------------------------



ELEV 4231	D	TDZE 4227	HIRL all Rwys TDZL/RCLS Rwys 16L, 16R, 17, 34L, 34R and 35				
4800	9000	TCH	TCH R-331	OGD	VGSi and LDA glidepath not coincident (VGSi Angle 3.00/TCH 74).		
I-UTJ DME ANTENNA	FORXS I-UTJ 0.2	WEEEL I-UTJ 0.9	KERNN I-UTJ 5.5	DRAPE I-UTJ 9.6	ZEPOG I-UTJ 14.6	PEDLE I-UTJ 17.7	10000
0.4	0.7	0.8	3.8 NM	4.1 NM	5 NM	3.1 NM	GS 3.00° TCH 55
CATEGORY	A	B	C	D	E		
S-LDA/GS 35	4677/24		250 (300-½)				
S-LDA 35	4660/24 433 (500-½)		4660/40 433 (500-¾)				

SW-4, 11 JUN 2026 to 09 JUL 2026

SW-4, 11 JUN 2026 to 09 JUL 2026