

# PITTT TWO ARRIVAL (RNAV) Transition Routes

AL-365 (FAA)

SALT LAKE CITY INTL (SLC)  
SALT LAKE CITY, UTAH

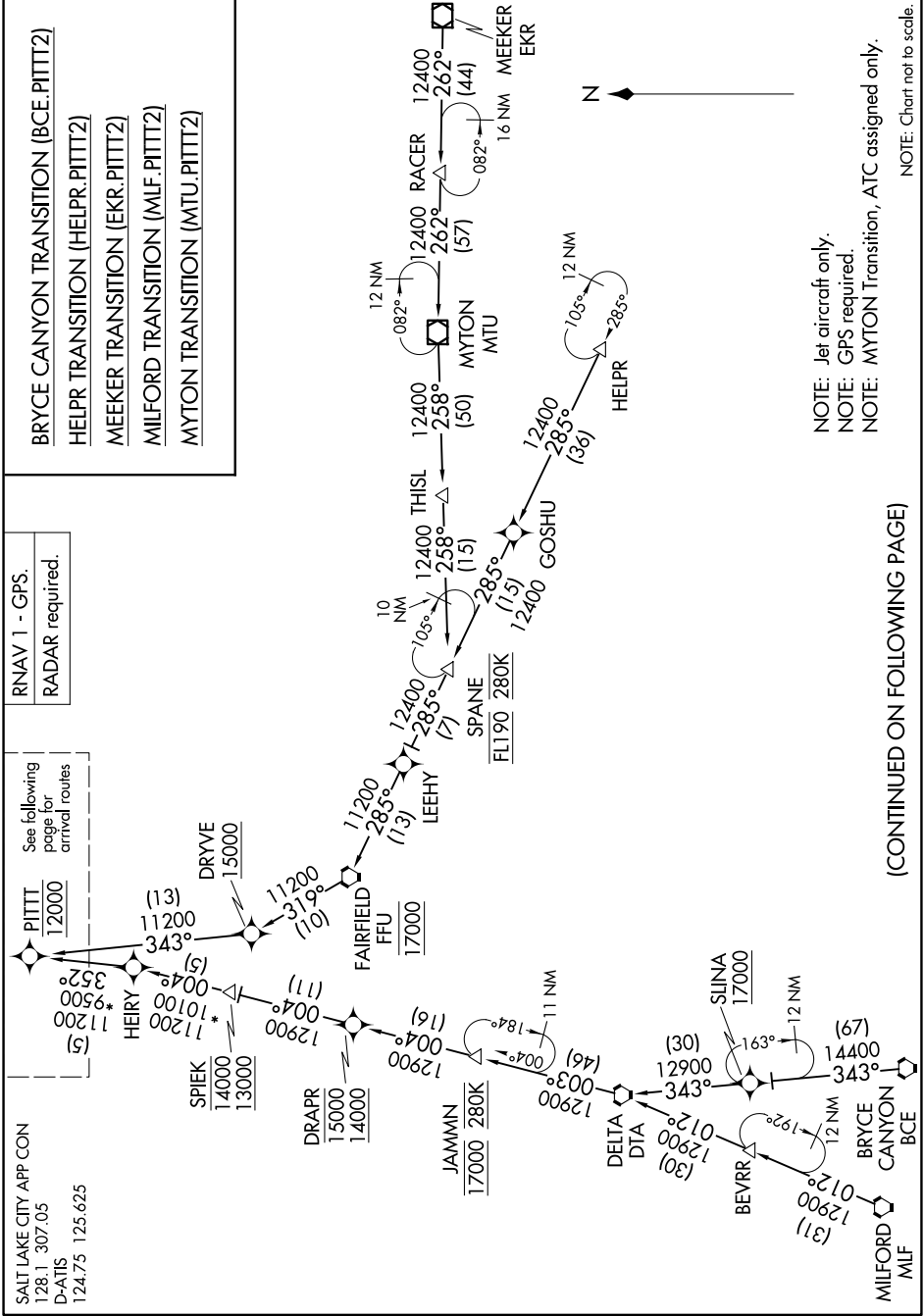
SW-4, 11 JUN 2026 to 09 JUL 2026

- BRYCE CANYON TRANSITION (BCE.PITTT2)
- HELPR TRANSITION (HELPR.PITTT2)
- MEEKER TRANSITION (EKR.PITTT2)
- MILFORD TRANSITION (MLF.PITTT2)
- MYTON TRANSITION (MTU.PITTT2)

RNAV 1 - GPS.  
RADAR required.

SALT LAKE CITY APP CON  
128.1 307.05  
D-ATIS  
124.75 125.625

See following page for arrival routes



NOTE: Jet aircraft only.  
NOTE: GPS required.  
NOTE: MYTON Transition, ATC assigned only.

NOTE: Chart not to scale.

(CONTINUED ON FOLLOWING PAGE)

SW-4, 11 JUN 2026 to 09 JUL 2026

# PITTT TWO ARRIVAL (RNAV) Transition Routes