

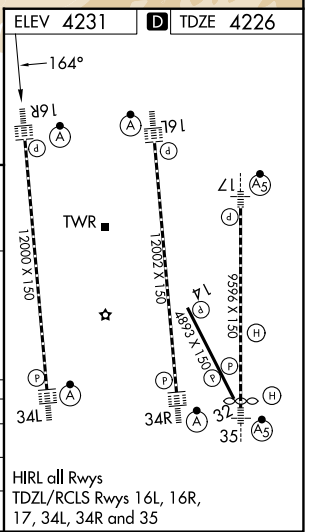
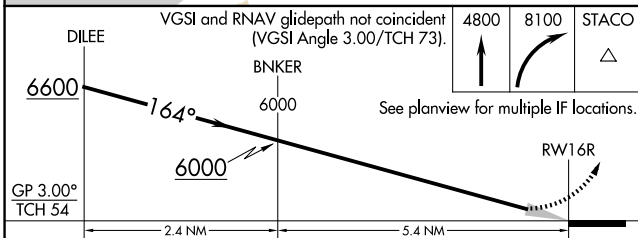
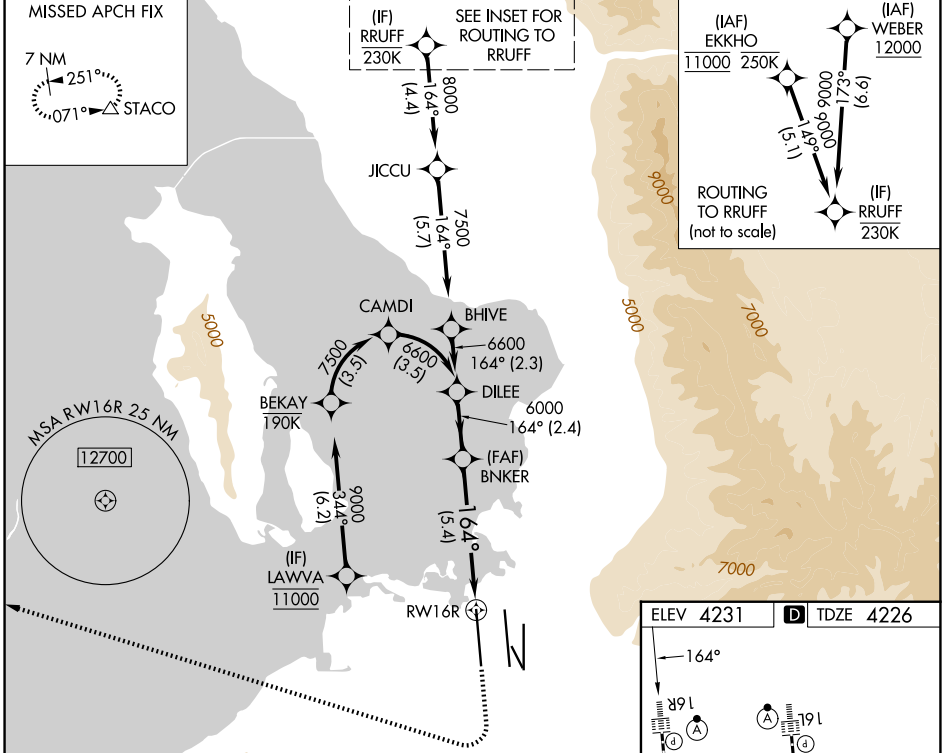
APP CRS 164°	Rwy Ldg TDZE Apt Elev	12000 4226 4231
------------------------	-----------------------------	--

RNAV (RNP) Z RWY 16R

SALT LAKE CITY INTL (SLC)

RNP AR APCH - GPS. Authorization required. From LAWVA: RF.		ALSIF-2 	MISSED APPROACH: Climb to 4800 then climbing right turn to 8100 direct STACO and hold.
<p>▼ For uncompensated Baro-VNAV systems, procedure NA below -10°C or above 54°C. Simultaneous approach authorized. For inop ALS, increase RNP 0.10 all Cats visibility to RVR 4000, and increase RNP 0.30 all Cats visibility to RVR 5500.</p>			*Missed approach requires minimum climb of 339 feet per NM to 4680.

D-ATIS 124.75 125.625	SALT LAKE CITY APP CON 125.7 284.6	SALT LAKE CITY TOWER 132.65 336.4	GND CON 123.775 348.6
---------------------------------	--	---	---------------------------------



CATEGORY	A	B	C	D
RNP 0.10 DA*		4481/24	255 (300-½)	
RNP 0.30 DA		4597/35	371 (400-¾)	

AUTHORIZATION REQUIRED

SW-4, 11 JUN 2026 to 09 JUL 2026

SW-4, 11 JUN 2026 to 09 JUL 2026