

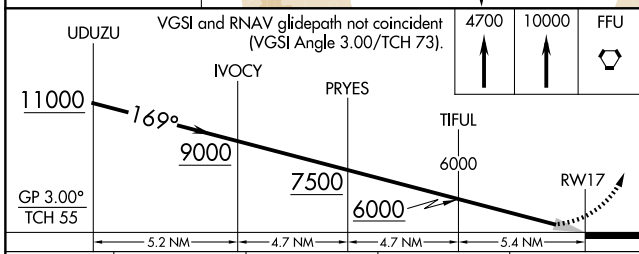
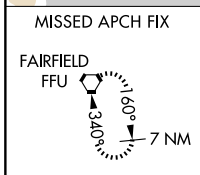
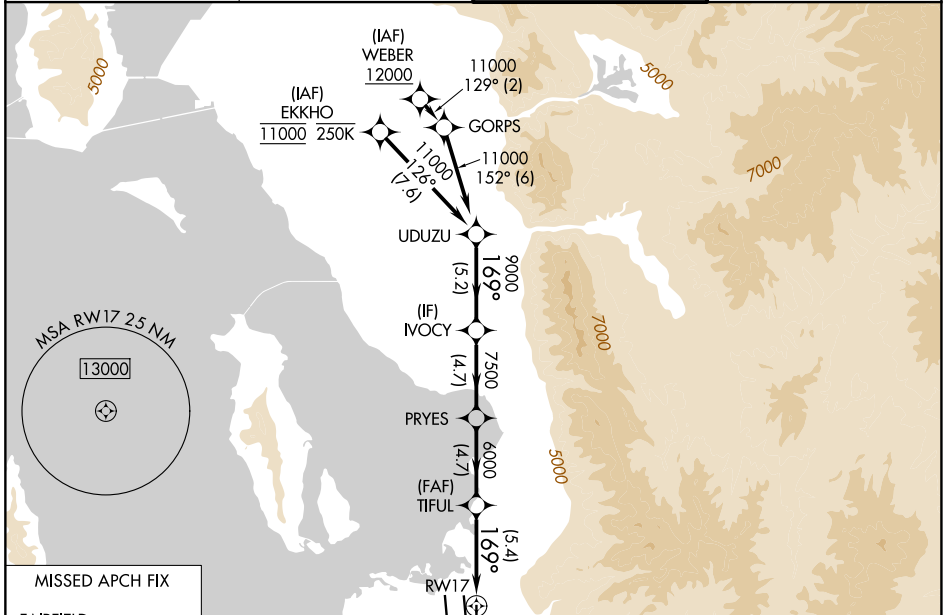
APP CRS	Rwy Ldg	<b>9596</b>
<b>169°</b>	TDZE	<b>4222</b>
	Apt Elev	<b>4231</b>

# RNAV (RNP) Z RWY 17

SALT LAKE CITY INTL (SLC)

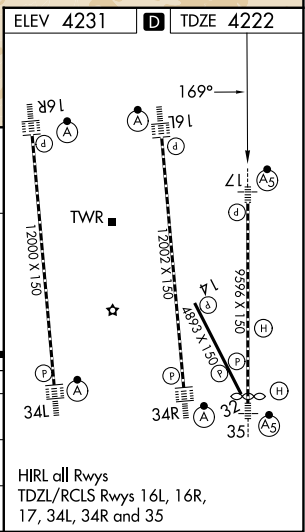
RNP AR APCH - GPS.		MALSR	MISSED APPROACH: Climb to 4700 then climb to 10000 direct FFU VORTAC and hold.
<p>▼ For unpenetrated Baro-VNAV systems, procedure NA below -10°C or above 54°C. Simultaneous approach authorized. For inop ALS, increase RNP 0.20 all Cats visibility to RVR 4000 and RNP 0.30 all Cats visibility to RVR 5500.</p>			

D-ATIS <b>124.75 125.625</b>	SALT LAKE CITY APP CON <b>125.7 284.6</b>	SALT LAKE CITY TOWER <b>118.3 257.8</b>	GND CON <b>123.775 348.6</b>
---------------------------------	----------------------------------------------	--------------------------------------------	---------------------------------



CATEGORY	A	B	C	D
RNP 0.20 DA		4472/24	250 (300-½)	
RNP 0.30 DA		4564/30	342 (400-¾)	

**AUTHORIZATION REQUIRED**



HIRL all Rwys  
TDZL/RCLS Rwys 16L, 16R,  
17, 34L, 34R and 35

SW-4, 11 JUN 2026 to 09 JUL 2026

SW-4, 11 JUN 2026 to 09 JUL 2026