

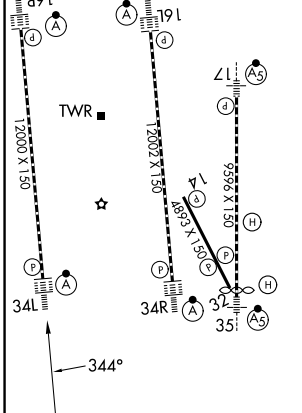
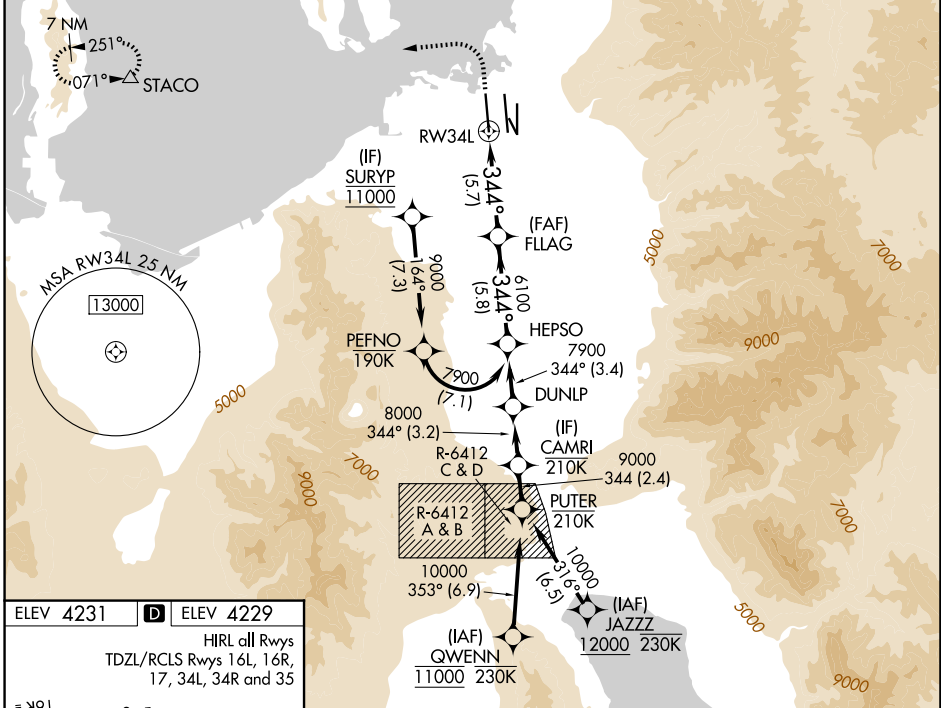
RNAV (RNP) Z RWY 34L

SALT LAKE CITY INTL (SLC)

APP CRS	Rwy Ldg	12000
344°	TDZE	4229
	Apt Elev	4231

RNP AR APCH - GPS. Authorization required. From PEFNO: RF.	ALSF-2 	MISSED APPROACH: Climb to 4800 then climbing left turn to 8100 direct STACO and hold. *Missed approach requires minimum climb of 250 feet per NM to 4700.
--	------------	--

D-ATIS 124.75 125.625	SALT LAKE CITY APP CON 125.7 284.6	SALT LAKE CITY TOWER 132.65 336.4	GND CON 123.775 348.6
---------------------------------	--	---	---------------------------------



ELEV 4231	D	ELEV 4229		
HIRL all Rwsy TDZL/RCLS Rwsy 16L, 16R, 17, 34L, 34R and 35				
4800	8100	STACO	VGSI and RNAV glidepath not coincident (VGSI Angle 3.00°/TCH 73).	
See planview for multiple IF locations.		FLAG	HEP SO	
RWY34L		6100	7900	
		344°	GP 3.00° TCH 55	
		5.7 NM	5.8 NM	
CATEGORY	A	B	C	D
RNP 0.10 DA*		4490/24	261 (300-½)	
RNP 0.20 DA		4530/24	301 (300-½)	
RNP 0.30 DA		4643/40	414 (500-¾)	
AUTHORIZATION REQUIRED				

SW-4, 11 JUN 2026 to 09 JUL 2026

SW-4, 11 JUN 2026 to 09 JUL 2026