

RNAV (RNP) Z RWY 34R

SALT LAKE CITY INTL (SLC)

APP CRS	Rwy Ldg	12002
344°	TDZE	4225
	Apt Elev	4231

RNP AR APCH - GPS. Authorization required.

▼ For uncompensated Baro-VNAV systems, procedure NA below -9°C or above 54°C. Simultaneous approach authorized.

ALSF-2

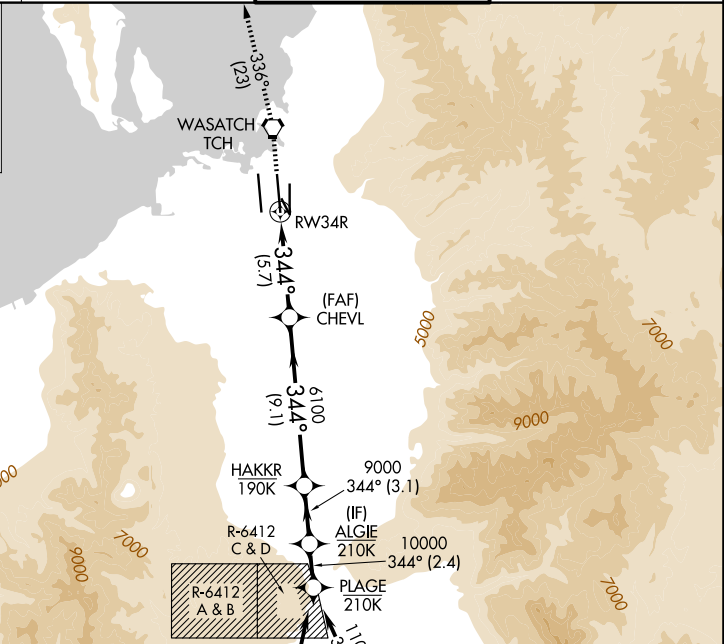
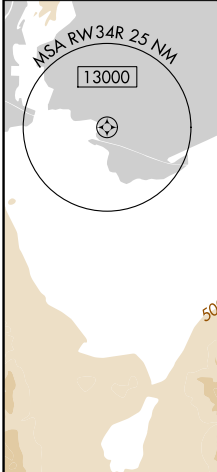
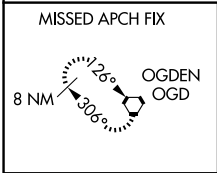
MISSED APPROACH: Climb to 9000 direct TCH VORTAC and on track 336° to OGD VORTAC and hold.

D-ATIS
124.75 125.625

SALT LAKE CITY APP CON
125.7 284.6

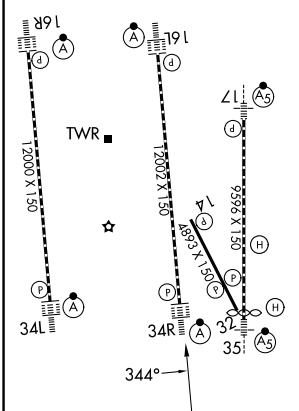
SALT LAKE CITY TOWER
119.05 257.8

GND CON
123.775 348.6



ELEV 4231 **D** TDZE 4225

HIRL all Rwys
TDZL/RCLS Rwys 16L, 16R,
17, 34L, 34R and 35



9000 TCH	Ir 336°	OGD	VGSi and RNAV glidepath not coincident (VGSi Angle 3.00/TCH 73).		PLAGE
			CHEVL	HAKKR	ALGIE
			6100		11000
				9000	10000
					GP 3.00°
					TCH 55
			5.7 NM	9.1 NM	3.1 NM
				2.4 NM	
CATEGORY	A	B	C	D	
RNP 0.10 DA		4546/26	321 (400-½)		
RNP 0.30 DA		4609/35	384 (400-¾)		

AUTHORIZATION REQUIRED

SW-4, 11 JUN 2026 to 09 JUL 2026

SW-4, 11 JUN 2026 to 09 JUL 2026