

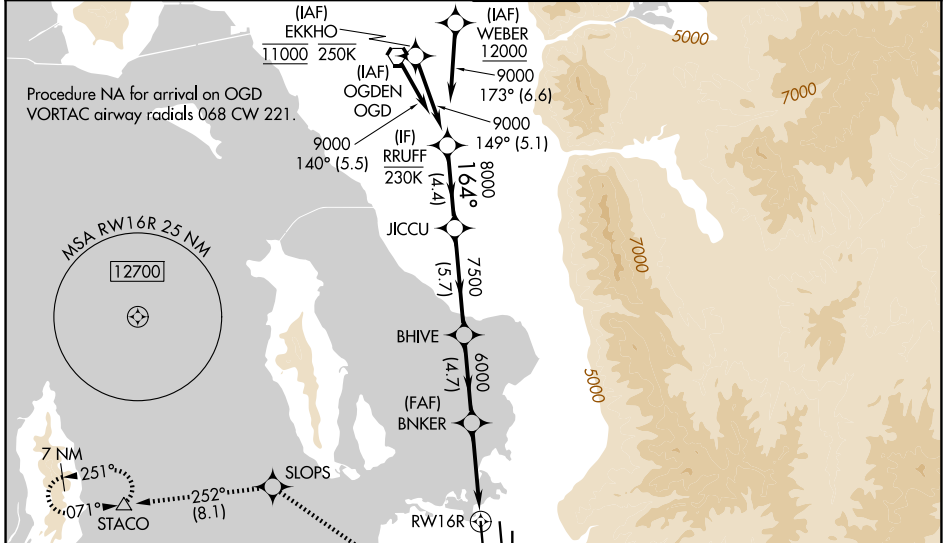
WAAS CH 42746 W16A	APP CRS 164°	Rwy Ldg TDZE 4226 Apt Elev 4231
--	------------------------	---

RNAV (GPS) Y RWY 16R

SALT LAKE CITY INTL (SLC)

<p>RNP APCH - GPS.</p> <p>⚠ Simultaneous approach authorized. LNAV procedure NA during simultaneous operations. Use of FD or AP required during simultaneous operations. For uncompensated Baro-VNAV systems, LNAV/VNAV NA below -10°C or above 50°C. For inop ALS, increase LPV* Cat E visibility to RVR 4000, increase LPV Cat E visibility to RVR 4500, increase LNAV/VNAV Cat E visibility to RVR 6000, increase LNAV# Cat E visibility to 1 3/8 SM, increase LNAV Cats C/D visibility to 1 3/8 SM, and increase LNAV Cat E visibility to 2 1/2 SM. Cat E restricted to USAF/USN aircraft.</p>		<p>ALSF-2</p> <p>MISSED APPROACH: Climb to 4700 then climbing right turn to 8900 direct SLOPS and on track 252° to STACO and hold, continue climb-in-hold.</p> <p>*Missed approach requires minimum climb of 225 feet per NM to 6400 for Cat E aircraft.</p> <p>#Missed approach requires minimum climb of 210 feet per NM to 6200 for Cat E aircraft.</p>
--	--	--

D-ATIS 124.75 125.625	SALT LAKE CITY APP CON 125.7 284.6	SALT LAKE CITY TOWER 132.65 336.4	GND CON 123.775 348.6
---------------------------------	--	---	---------------------------------



<p>VGSI and RNAV glidepath not coincident (VGSI Angle 3.00/TCH 73).</p> <p>RRUFF</p> <p>JICCU</p> <p>BHIVE</p> <p>BNKER</p> <p>SLOPS</p> <p>STACO</p> <p>9000</p> <p>8000</p> <p>7500</p> <p>6000</p> <p>4700</p> <p>8900</p> <p>164°</p> <p>1.4 NM to RWY 16R</p> <p>1.4 NM</p> <p>GP 3.00°</p> <p>TCH 54</p> <p>4.4 NM</p> <p>5.7 NM</p> <p>4.7 NM</p> <p>4 NM</p> <p>1.4</p>		<p>ELEV 4231</p> <p>TDZE 4226</p> <p>164°</p> <p>191</p> <p>191</p> <p>111</p> <p>9596 X 150</p> <p>12007 X 150</p> <p>1693 X 150</p> <p>34L</p> <p>34R</p> <p>35</p> <p>TWR</p> <p>☆</p> <p>HIRL all Rwys</p> <p>TDZL/RCLS Rwys 16L, 16R, 17, 34L, 34R and 35</p>			
CATEGORY	A	B	C	D	E
LPV DA*	NA				4426/18 200 (200-1/2)
LPV DA	4426/18				200 (200-1/2) 263 (300-1/2)
LNAV/VNAV DA	4620/35				394 (400-5/8)
LNAV MDA#	NA				4740/55 514 (600-1)
LNAV MDA	4740/24	514 (600-1/2)	4740/55	514 (600-1)	5000-1 3/4 774 (800-1 3/4)

SW-4, 11 JUN 2026 to 09 JUL 2026

SW-4, 11 JUN 2026 to 09 JUL 2026