

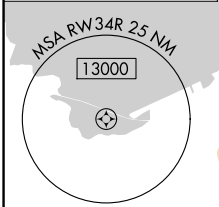
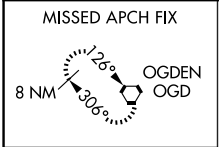
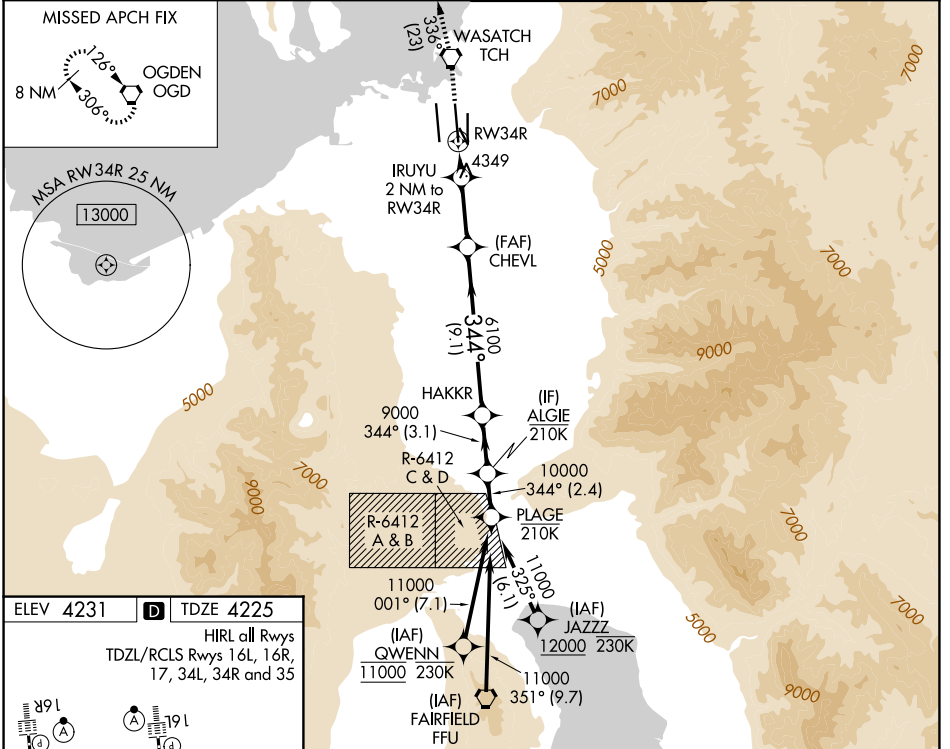
WAAAS CH 49230 W34A	APP CRS 344°	Rwy Ldg TDZE 4225 Apt Elev 4231
-----------------------------------------	------------------------	-----------------------------------------------------

RNAV (GPS) Y RWY 34R

SALT LAKE CITY INTL (SLC)

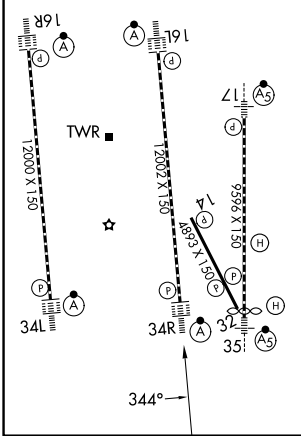
RNP APCH - GPS		ALSF-2 	MISSED APPROACH: Climb to 9000 direct TCH VORTAC and on track 336° to OGD VORTAC and hold.
<p>Simultaneous approach authorized. For uncompensated Baro-VNAV systems, RNAV/VNAV NA below -9°C or above 49°C. Use of FD or AP providing RNAV track guidance required during simultaneous operations. LNAV procedure NA during simultaneous operations. For inop ALS, increase LPV Cat E visibility to RVR 4000, LNAV/VNAV Cat E visibility to RVR 5000, LNAV Cats C/D visibility to RVR 5500, LNAV Cat E visibility to RVR 6000. Cat E restricted to USAF/USN aircraft.</p>			

D-ATIS 124.75 125.625	SALT LAKE CITY APP CON 125.7 284.6	SALT LAKE CITY TOWER 119.05 257.8	GND CON 123.775 348.6
---------------------------------	----------------------------------------------	---------------------------------------------	---------------------------------



ELEV 4231	D	TDZE 4225
-----------	----------	-----------

HIRL all Rwys
TDZL/RCLS Rwys 16L, 16R,
17, 34L, 34R and 35



9000 TCH	IRUYU 2 NM to RW34R	OGD	VGSIs and RNAV glidepath not coincident (VGSi Angle 3.00/TCH 73).	PLAGE	
↑	tr 336°	↑			
	CHEVL 6100	HAKKR	ALGIE	11000	
	4900	9000	10000	GP 3.00° TCH 55	
	1 NM to RW34R	3.8 NM	9.1 NM	3.1 NM	
	1 NM			2.4 NM	
CATEGORY	A	B	C	D	E
LPV DA	4425/18 200 (200-½)				
LNAV/VNAV DA	4557/26 332 (400-½)				
LNAV MDA	4600/24	375 (400-½)	4600/35	375 (400-¾)	4640/40 415 (500-¾)