

(SVALY2.FFU) 25163

SOUTH VALLEY TWO DEPARTURE (RNAV)

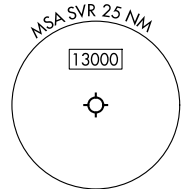
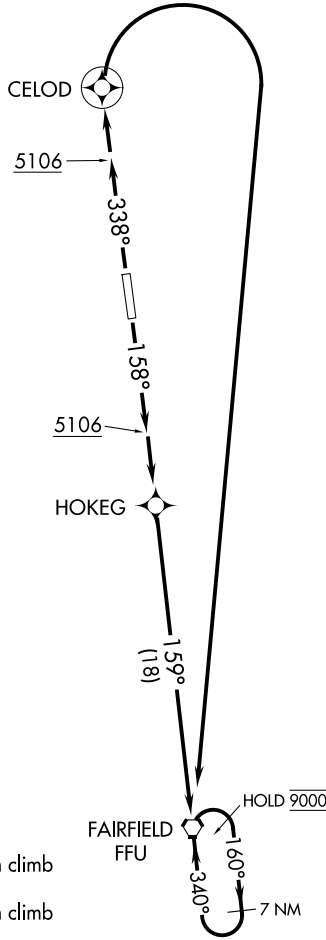
AL-366 (FAA)

SOUTH VALLEY RGNL (SVR)
SALT LAKE CITY, UTAH

SALT LAKE CITY DEP CON
120.9 322.3
CLNC DEL
127.0
UNICOM
122.7 (CTAF)
AWOS-3PT
134.425

RNAV 1 - GPS.

**TOP ALTITUDE:
9000**



TAKEOFF MINIMUMS

Rwy 16: Standard with minimum climb of 300'/NM to 7800.
Rwy 34: Standard with minimum climb of 495'/NM to 9000.

NOTE: Chart not to scale.



DEPARTURE ROUTE DESCRIPTION

TAKEOFF RUNWAY 16: Climb heading 158° to 5106, then climb to 9000 direct HOKEG, and on track 159° to FFU VORTAC and hold, thence. . .

TAKEOFF RUNWAY 34: Climb heading 338° to 5106, then climb to 9000 direct CELOD, and right turn direct FFU VORTAC and hold, thence. . .

. . . maintain 9000. Expect further clearance to filed altitude and route within 10 minutes of departure.

SOUTH VALLEY TWO DEPARTURE (RNAV)

(SVALY2.FFU) 17APR25

SALT LAKE CITY, UTAH
SOUTH VALLEY RGNL (SVR)

SW-4, 11 JUN 2026 to 09 JUL 2026

SW-4, 11 JUN 2026 to 09 JUL 2026