

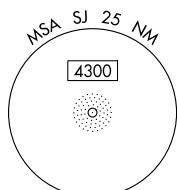
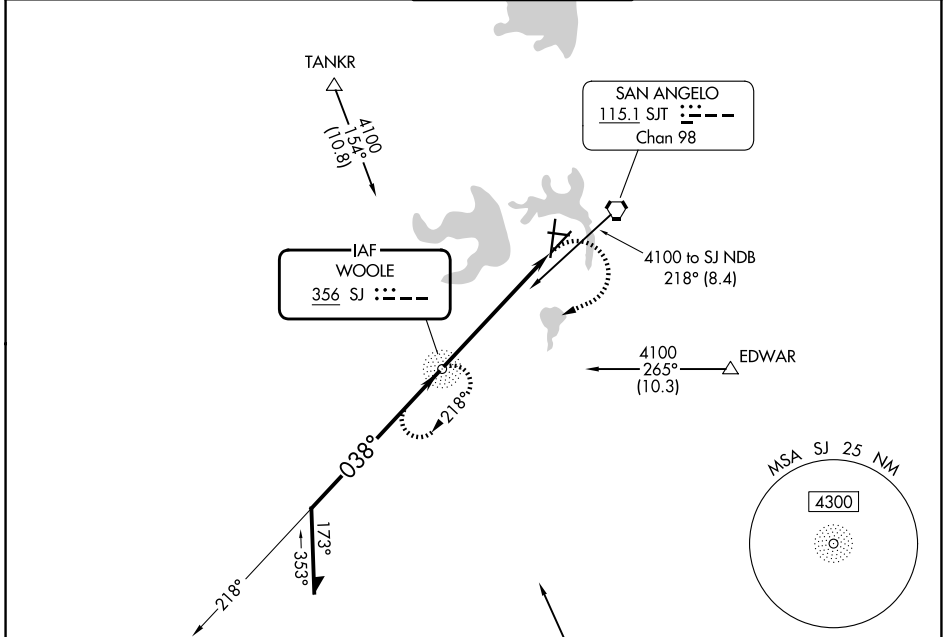
NDB SJ <b>356</b>	APP CRS <b>038°</b>	Rwy Ldg TDZE Apt Elev	<b>5940</b> <b>1917</b> <b>1919</b>
----------------------	------------------------	-----------------------------	---

# NDB RWY 3

SAN ANGELO RGNL/MATHIS FLD (SJT)

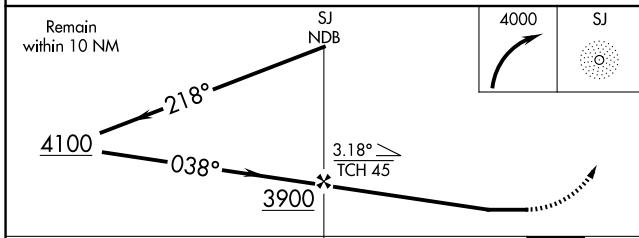
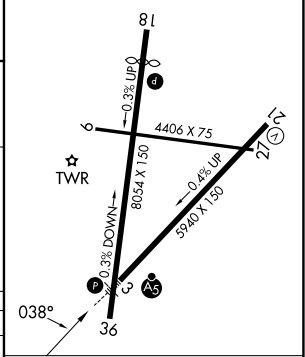
<p>For inop ALS, increase Cat A/B visibility to RVR 5500, and Cat C/D to 2 SM.</p>		MISSED APPROACH: Climbing right turn to 4000 direct SJ NDB and hold.		
		ATIS <b>128.45 319.0</b>	SAN ANGELO APP CON ★ <b>125.35 354.1</b>	MATHIS TOWER ★ <b>118.3 (CTAF) 284.7</b>

ATIS <b>128.45 319.0</b>	SAN ANGELO APP CON ★ <b>125.35 354.1</b>	MATHIS TOWER ★ <b>118.3 (CTAF) 284.7</b>	GND CON <b>121.9 348.6</b>	UNICOM <b>122.95</b>
-----------------------------	---	---	-------------------------------	-------------------------



ELEV 1919	<b>D</b>	TDZE 1917
-----------	----------	-----------

- MIRL Rwy 9-27 and 18-36
- HIRL Rwy 3-21
- REIL Rwy 18



CATEGORY	A	B	C	D
S-3	2640/40	723 (800-¾)	2640-1½	723 (800-1½)
CIRCLING	2640-1	721 (800-1)	2640-2	2700-2½ 781 (800-2½)

FAF to MAP 5.7 NM					
Knots	60	90	120	150	180
Min:Sec	5:42	3:48	2:51	2:17	1:54

SC-3, 11 JUN 2026 to 09 JUL 2026

SC-3, 11 JUN 2026 to 09 JUL 2026