

ALAMO FIVE DEPARTURE

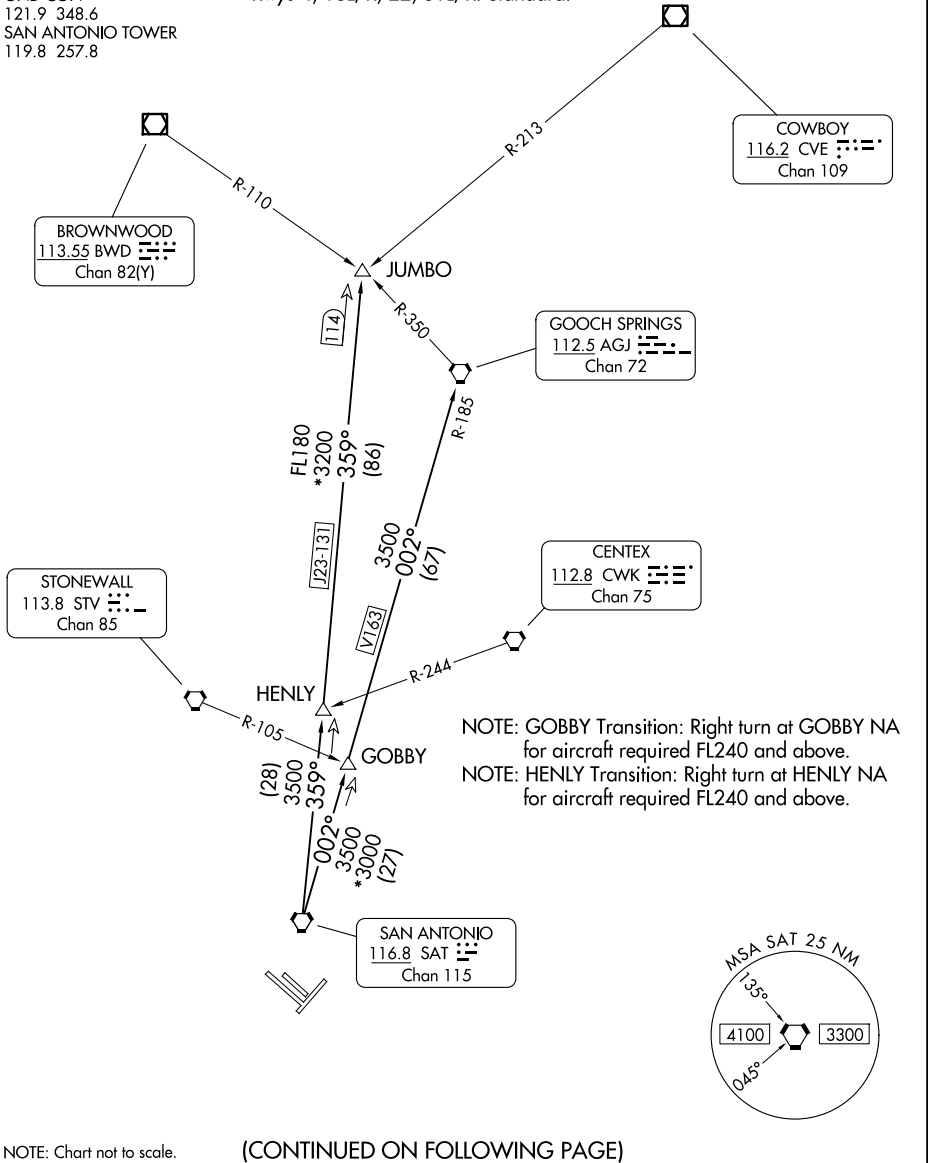
RADAR required.

**TOP ALTITUDE:
5000**

SAN ANTONIO DEP CON
125.1 307.0 (4, 22, 31)
127.1 269.1 (13)
D-ATIS
118.9
CLNC DEL
126.7
CPDLC
GND CON
121.9 348.6
SAN ANTONIO TOWER
119.8 257.8

TAKEOFF MINIMUMS

Rwys 4, 13L/R, 22, 31L/R: Standard.



SC-3, 11 JUN 2026 to 09 JUL 2026

SC-3, 11 JUN 2026 to 09 JUL 2026

NOTE: Chart not to scale.

(CONTINUED ON FOLLOWING PAGE)

ALAMO FIVE DEPARTURE