

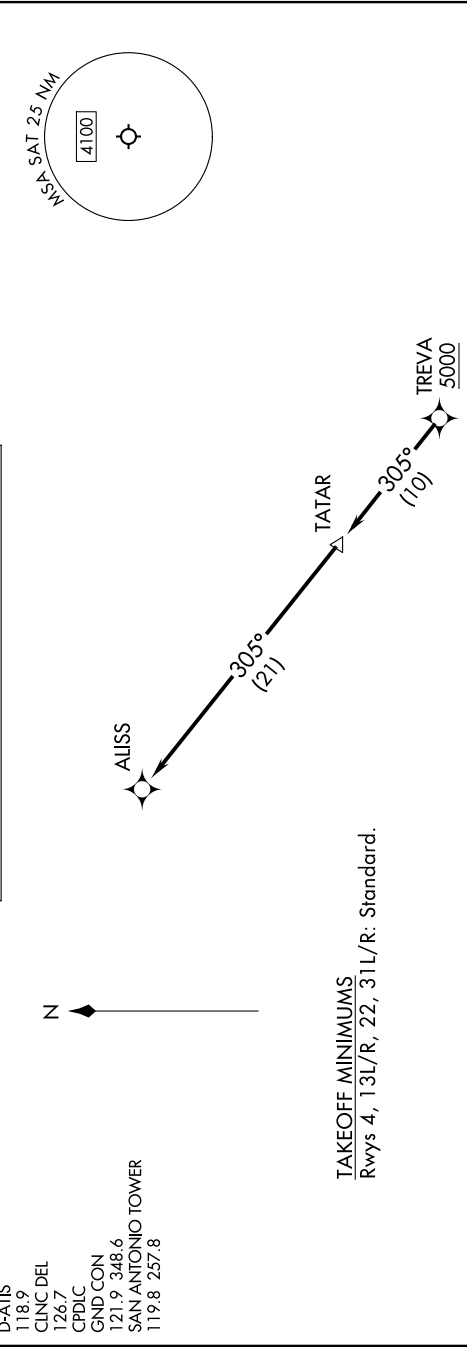
# ALISS SEVEN DEPARTURE (RNAV)

6Z02 JUN 09 11 11 '8-C-SC

**TOP ALTITUDE:**  
5000

RNAV 1 - DME/DME/IRU or GPS.  
RADAR required for non-GPS equipped aircraft.  
RADAR required.

SAN ANTONIO DEP CON  
125.1 307.0 (31L/R)  
125.7 290.225 (13L/R, 22)  
127.1 269.1 (4)  
D-ATIS  
118.9  
CLNC DEL  
126.7  
CPDLC  
GND CON  
121.9 348.6  
SAN ANTONIO TOWER  
119.8 257.8



TAKEOFF MINIMUMS  
Rwys 4, 13L/R, 22, 31L/R: Standard.

**DEPARTURE ROUTE DESCRIPTION**

**TAKEOFF RUNWAY 4:** Climb on heading 037° or as assigned by ATC, for vectors to TREVA, thence. . . .

**TAKEOFF RUNWAYS 13L/R:** Climb on heading 128° or as assigned by ATC, for vectors to TREVA, thence. . . .

**TAKEOFF RUNWAY 22:** Climb on heading 217° or as assigned by ATC, for vectors to TREVA, thence. . . .

**TAKEOFF RUNWAYS 31L/R:** Climb on heading 308° or as assigned by ATC, for vectors to TREVA, thence. . . .

. . . on track 305° to TATAR, then on track 305° to ALISS. Maintain 5000. Expect filed altitude 10 minutes after departure.

NOTE: Chart not to scale.

# ALISS SEVEN DEPARTURE (RNAV)