

CRVZA TWO ARRIVAL (RNAV) Transition Routes

SAN ANTONIO, TEXAS

SC-3, 11 JUN 2026 to 09 JUL 2026

SAN ANTONIO APP CON

- 125.7 290.225
- BAZ ATIS
- 119.325
- KRND ATIS \*
- 290.525
- SAT D-ATIS
- 118.9
- SKF ATIS
- 120.45 273.5
- SSF ATIS
- 128.8

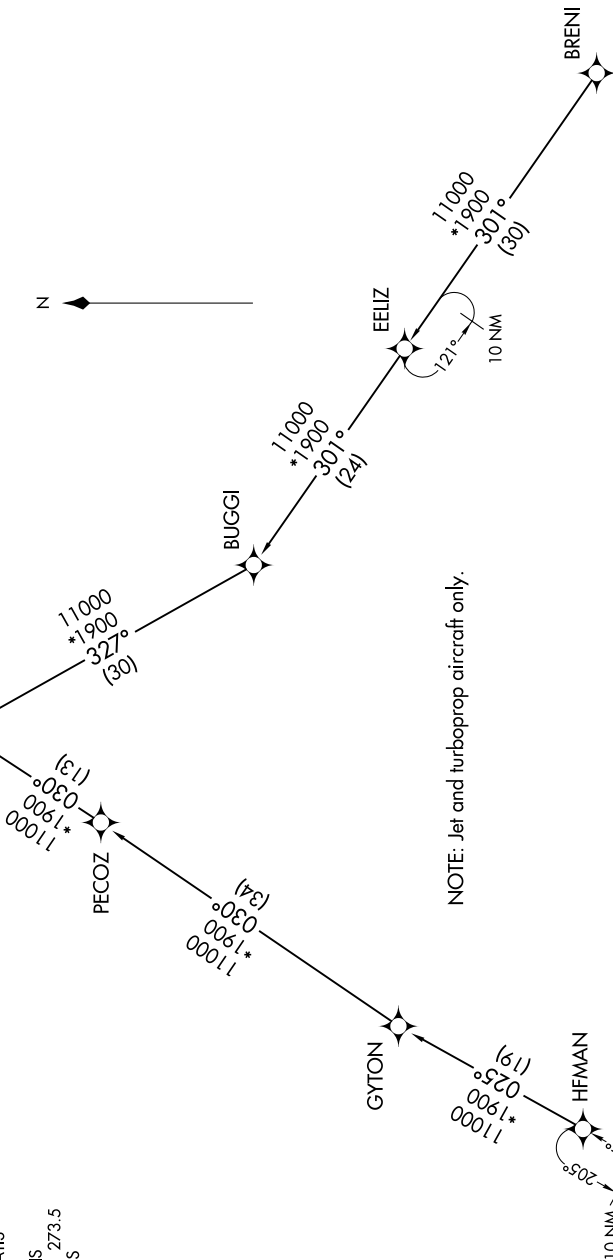
See following page for arrival routes.

CRVZA

17000 250K  
11000

RNAV 1 - DME/DME/IRU or GPS.

RADAR required.



NOTE: Jet and turboprop aircraft only.

BRENI TRANSITION (BRENI.CRVZA2)  
 EELIZ TRANSITION (EELIZ.CRVZA2)  
 HFMAN TRANSITION (HFMAN.CRVZA2)

(CONTINUED ON FOLLOWING PAGE)

NOTE: Chart not to scale.

SC-3, 11 JUN 2026 to 09 JUL 2026

CRVZA TWO ARRIVAL (RNAV) Transition Routes

SAN ANTONIO, TEXAS