

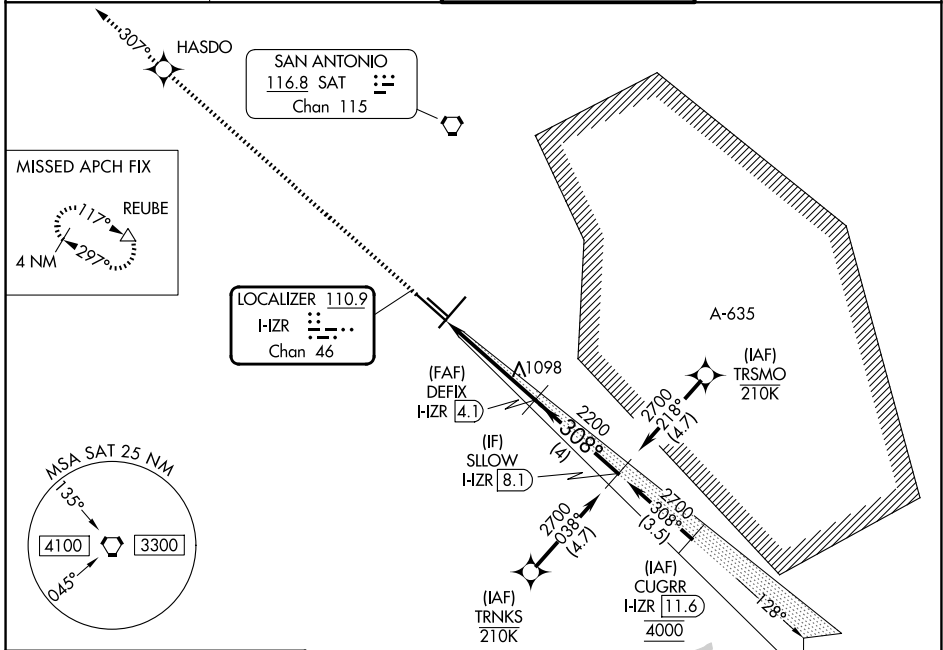
LOC/DME I-HZR 110.9 Chan 46	APP CRS 308°	Rwy 31L Ldg 8502 TDZE 790 Apt Elev 809	Rwy 31R Ldg 5519 TDZE 788 Apt Elev 809
--	------------------------	---	---

ILS or LOC RWY 31L

SAN ANTONIO INTL (SAT)

RNP APCH - GPS.
 Aircraft not GPS equipped - RADAR required for procedure entry. DME required.
 MALSR MISSED APPROACH: Climb to 4200 direct HASDO and track 307° to REUBE and hold.
 Circling NA northwest of Rwsy 4 and 13R.
 * RVR 1800 authorized with use of FD or AP or HUD to DA.

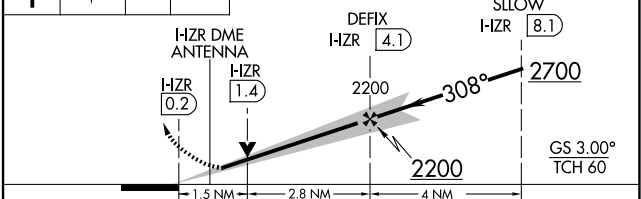
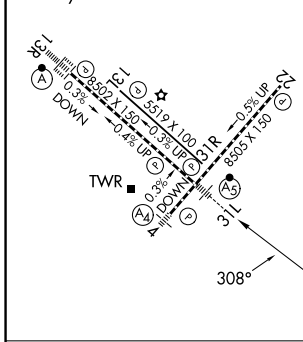
D-ATIS 118.9	SAN ANTONIO APP CON 125.1 307.0	SAN ANTONIO TOWER 119.8 257.8	GND CON 121.9 348.6
------------------------	---	---	-------------------------------



ELEV 809	D	TDZE 790 31L 788 31R
-----------------	----------	---------------------------------------

TDZL/RCLS Rwy 13R
 REIL Rwsy 13L, 22 and 31R
 HIRL Rwsy 4-22 and 13R-31L
 MIRL Rwy 13L-31R

4200 HASDO REUBE
 tr 307°
 VGSi and ILS glidepath not coincident
 (VGSi Angle 3.00/TCH 82).



FAF to MAP 4.3 NM					
Knots	60	90	120	150	180
Min:Sec	4:18	2:52	2:09	1:43	1:26
CATEGORY	A	B	C	D	
S-ILS 31L *	990/24 200 (200-½)				
S-LOC 31L	1360/24	570 (600-½)	1360/60	570 (600-¼)	
SIDESTEP 31R	1360-1	572 (600-1)	1360-1½ 572 (600-½)	1360-2 572 (600-2)	
CIRCLING	1360-1	551 (600-1)	1420-1¾ 611 (700-1¾)	1520-2¼ 711 (800-2¼)	

SC-3, 11 JUN 2026 to 09 JUL 2026

SC-3, 11 JUN 2026 to 09 JUL 2026