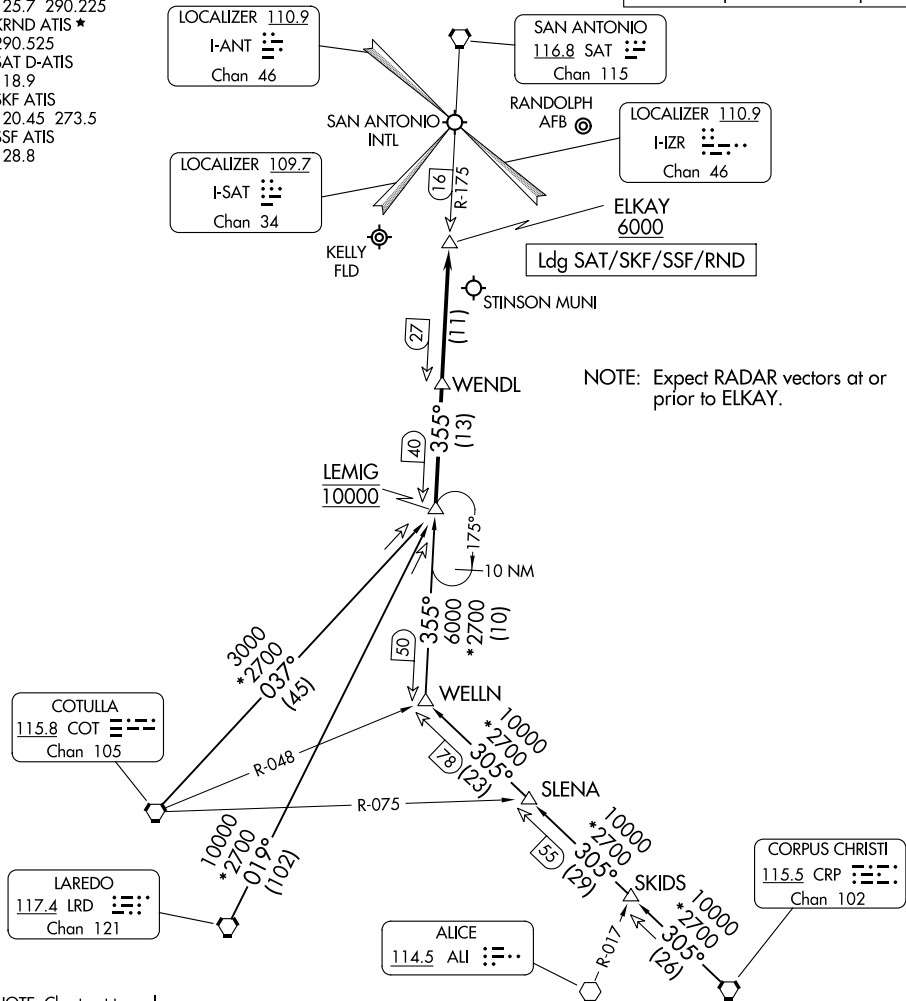


LEMIG TWO ARRIVAL

SAN ANTONIO, TEXAS

SAN ANTONIO APP CON
 125.7 290.225
 KRND ATIS *
 290.525
 SAT D-ATIS
 118.9
 SKF ATIS
 120.45 273.5
 SSF ATIS
 128.8

RADAR required. DME required.



NOTE: Expect RADAR vectors at or prior to ELKAY.

NOTE: Chart not to scale.

ARRIVAL ROUTE DESCRIPTION

CORPUS CHRISTI TRANSITION (CRP.LEMIG2): From over CRP VORTAC on CRP R-305 to WELLN, then on SAT R-175 to LEMIG. Thence

COTULLA TRANSITION (COT.LEMIG2): From over COT VORTAC on COT R-037 to LEMIG. Thence

LAREDO TRANSITION (LRD.LEMIG2): From over LRD VORTAC on LRD R-019 to LEMIG. Thence

LANDING ALL AIRPORTS: From LEMIG on SAT R-175 to cross ELKAY at or above 6000. Expect RADAR vectors to final approach course.

LEMIG TWO ARRIVAL

SAN ANTONIO, TEXAS