

# RNAV (RNP) Z RWY 31L

SAN ANTONIO INTL (SAT)

APP CRS	Rwy Ldg	<b>8502</b>
<b>308°</b>	TDZE	<b>790</b>
	Apt Elev	<b>809</b>

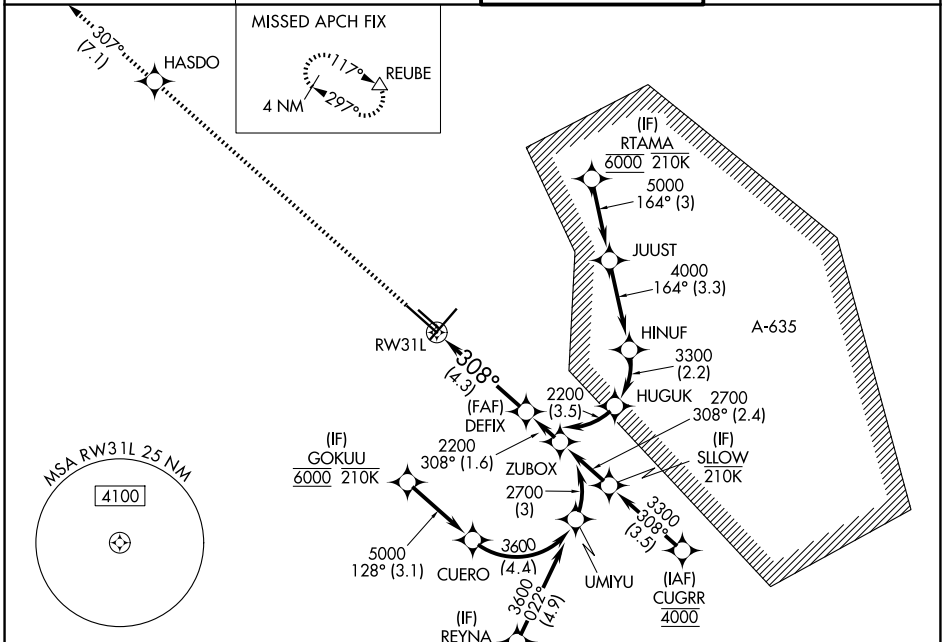
RNP AR APCH - GPS.

▼ For uncompensated Baro-VNAV systems, procedure NA below -5°C or above 54°C. For inop ALS, increase RNP 0.15 all Cats visibility to RVR 5500, increase RNP 0.30 all Cats visibility to RVR 6000.

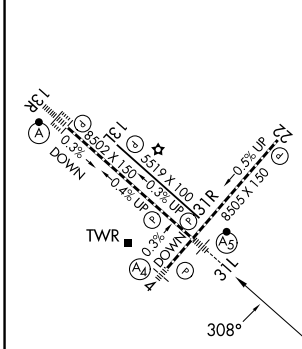


MISSED APPROACH: Climb to 4200 direct HASDO and track 307° to REUBE and hold.

D-ATIS <b>118.9</b>	SAN ANTONIO APP CON <b>125.1 307.0</b>	SAN ANTONIO TOWER <b>119.8 257.8</b>	GND CON <b>121.9 348.6</b>
------------------------	---	---	-------------------------------



ELEV 809	<b>D</b>	TDZE 790
----------	----------	----------



TDZL/RCLS Rwy 13R  
REIL Rwys 13L, 22 and 31R  
HIRL Rwys 4-22 and 13R-31L  
MIRL Rwy 13L-31R



4200	HASDO	REUBE	VGSi and RNAV glidepath not coincident (VGSi Angle 3.00°/TCH 82).
↑	✧	△	
See planview for multiple IF locations.			
RW31L		DEFIX	2200
			GP 3.00° TCH 60

CATEGORY	A	B	C	D
RNP 0.15 DA		1144/30	354 (400-¾%)	
RNP 0.30 DA		1200/40	410 (400-¾%)	

**AUTHORIZATION REQUIRED**

SC-3, 11 JUN 2026 to 09 JUL 2026

SC-3, 11 JUN 2026 to 09 JUL 2026