

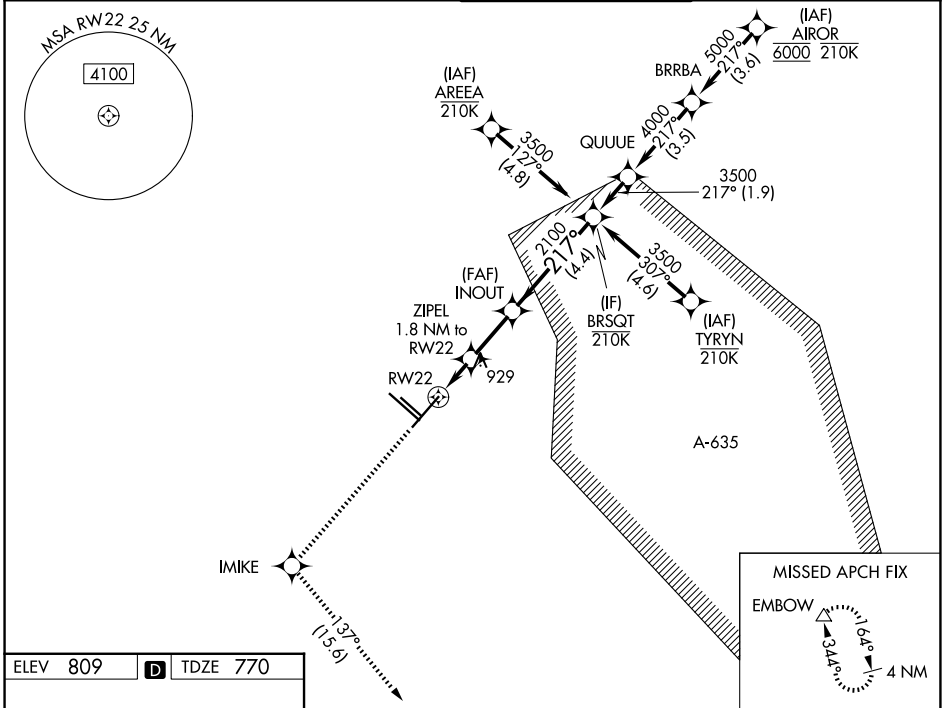
WAAS CH <b>69430</b> W22A	APP CRS <b>217°</b>	Rwy Ldg TDZE <b>770</b> Apt Elev <b>809</b>
---------------------------------	------------------------	--

# RNAV (GPS) Y RWY 22

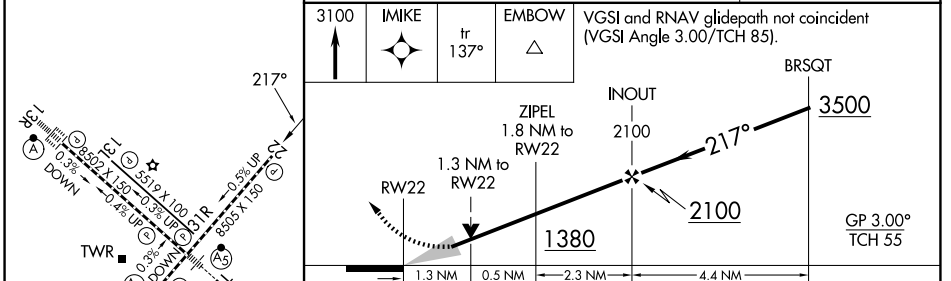
SAN ANTONIO INTL (SAT)

RNP APCH - GPS.	MISSED APPROACH: Climb to 3100 direct IMIKE and on track 137° to EMBOW and hold.
▼ For uncompensated Baro-VNAV systems, LNAV/VNAV NA below -6°C or above 54°C. ▲ Circling NA northwest of Rwy 4 and 13R.	

D-ATIS <b>118.9</b>	SAN ANTONIO APP CON <b>125.1 307.0</b>	SAN ANTONIO TOWER <b>119.8 257.8</b>	GND CON <b>121.9 348.6</b>
------------------------	---	---	-------------------------------



ELEV 809	<b>D</b>	TDZE 770
----------	----------	----------



CATEGORY	A	B	C	D
LPV DA		970-3/4	200 (200-3/4)	
LNAV/VNAV DA		1240-1 3/8	470 (500-1 3/8)	
LNAV MDA	1240-1	470 (500-1)	1240-1 3/8	470 (500-1 3/8)
CIRCLING	1280-1 471 (500-1)	1340-1 531 (600-1)	1420-1 3/4 611 (700-1 3/4)	1540-2 1/4 731 (800-2 1/4)

TDZL/RCLS Rwy 13R  
REIL Rwy 13L, 22 and 31R  
HIRL Rwy 4-22 and 13R-31L  
MIRL Rwy 13L-31R

SC-3, 11 JUN 2026 to 09 JUL 2026

SC-3, 11 JUN 2026 to 09 JUL 2026