

# HI-ILS or LOC/DME Z RWY 34

LOC I-OSQ <b>110.7</b>	APCH CRS <b>338°</b>	Rwy Idg <b>11,550</b> TDZE <b>660</b> Arprt Elev <b>690</b>
---------------------------	-------------------------	---

[USAF]

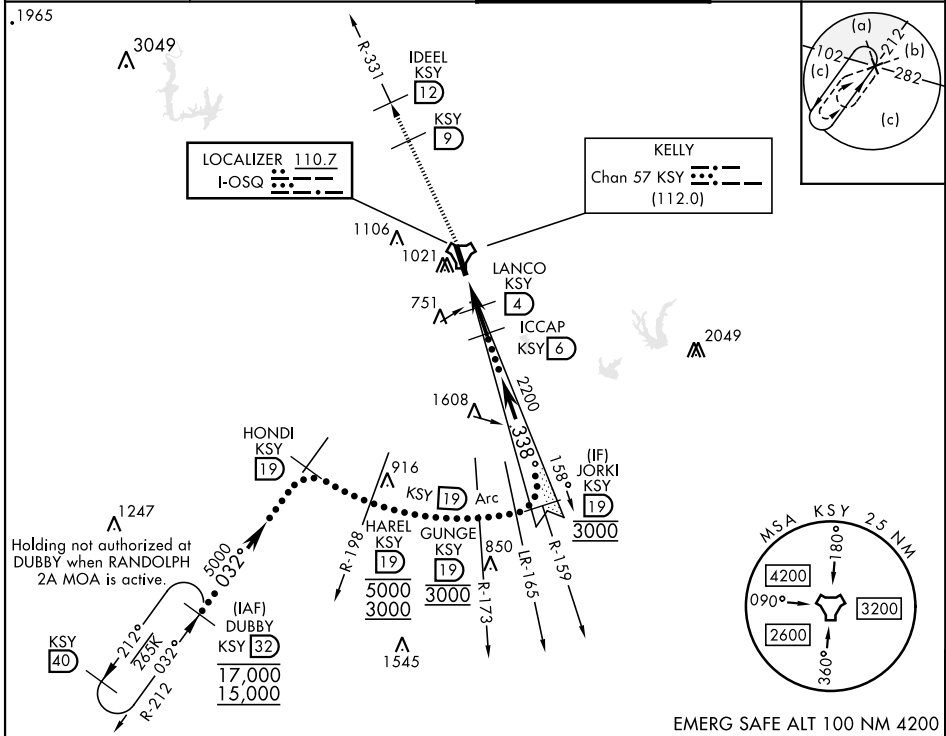
KELLY FLD (KSKF)

\* When ALS inop, increase RVR to 40 and vis to ¼ mile.  
 \*\* When ALS inop, increase RVR to 55 and vis to 1 mile.  
 \*\*\* Circling not authorized E of Rwy 16-34.



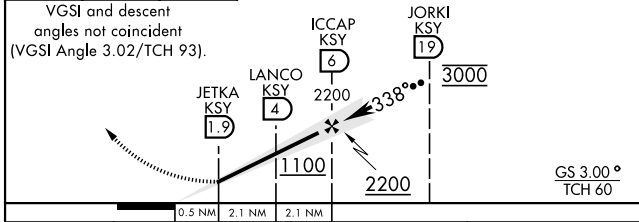
**MISSED APPROACH:** Climbing to 2500 via KSY TACAN R-331 until 9 DME, cross 9 DME at 2500, then continue climb to 3000 to IDEEL/12.0 DME. Expect ATC instructions.

ATIS <b>120.45 273.5</b>	SAN ANTONIO APP CON <b>118.05 353.5</b>	TOWER <b>124.3 322.35</b>	GND CON <b>121.8 289.4</b>
-----------------------------	--	------------------------------	-------------------------------

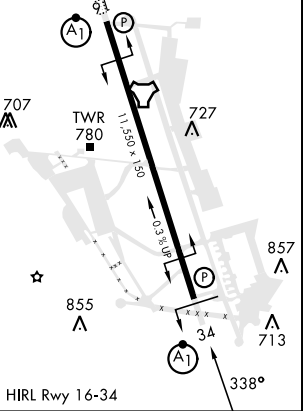


EMERG SAFE ALT 100 NM 4200

2500 KSY R-331	KSY R-331 9	3000 IDEEL KSY 12
----------------------	-------------------	----------------------------



ELEV 690	TDZE 660
----------	----------



CATEGORY	C	D	E
S-ILS 34*	860/24	200	(200-½)
S-LOC 34**	1020/30	360	(400-¾)
CIRCLING***	1340-134 650 (700-134)	1900-3	1210 (1300-3)

# HI-ILS or LOC/DME Z RWY 34

SC-3, 11 JUN 2026 to 09 JUL 2026

SC-3, 11 JUN 2026 to 09 JUL 2026