

ILS or LOC/DME Y RWY 16

LOC I-SKF 110.1	APCH CRS 158°	Rwy Idg 11,550 TDZE 690 Arprt Elev 690
---------------------------	-------------------------	---

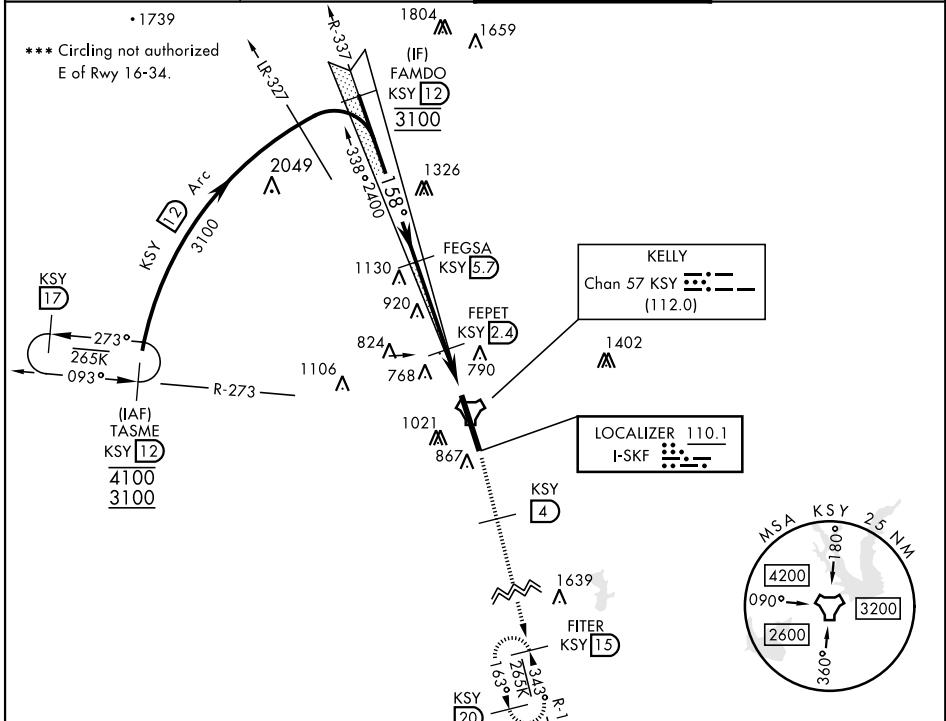
[USAF]

KELLY FLD (KSKF)

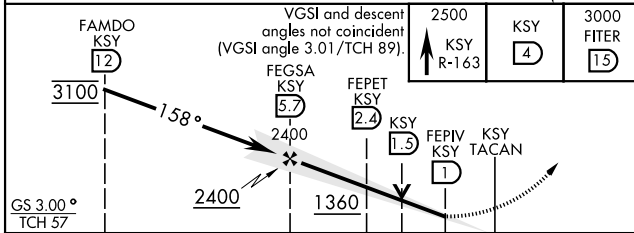
*When ALS inop, increase RVR to 40 and vis to ¾ mile.
 **When ALS inop, increase CAT AB RVR to 55 and vis to 1 mile, CAT CDE RVR to 60 and vis to 1½ miles.

 ALSF-1 MISSED APPROACH: Climb to 2500 via KSY R-163 until 4 DME, then continue climb to 3000 to FITER/1.5 DME and hold. Non-TACAN equipped aircraft expect alternate missed approach instructions.

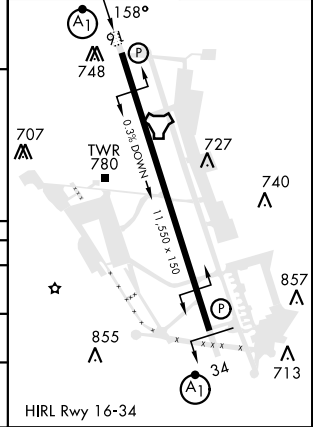
ATIS 120.45 273.5	SAN ANTONIO APP CON 118.05 353.5	TOWER 124.3 322.35	GND CON 121.8 289.4
------------------------------------	---	-------------------------------------	--------------------------------------



EMERG SAFE ALT 100 NM 4200



ELEV 690	TDZE 690
----------	----------



CATEGORY	A	B	C	D	E
S-ILS 16*	890/24		200	(200-½)	
S-LOC/DME 16**	1080/24	390 (400-½)	1080/35	390	(400-¾)
C CIRCLING ***	1200-1 510 (600-1)	1280-1 590 (600-1)	1340-1¾ 650 (700-1¾)	1900-3 1210 (1300-3)	

ILS or LOC/DME Y RWY 16

SC-3, 11 JUN 2026 to 09 JUL 2026

SC-3, 11 JUN 2026 to 09 JUL 2026