

SAN ANTONIO, TEXAS

# RNAV (GPS) RWY 34

WAAS CH <b>65364</b> <b>W34A</b>	APCH CRS <b>338°</b>	Rwy ldg TDZE Arprt Elev <b>690</b>	<b>11,550</b> <b>660</b> <b>690</b>
--	-------------------------	---------------------------------------	---

(USAF)

KELLY FLD (KSKF)

RNP APCH-GPS

ALSF-1

MISSED APPROACH: Climb to 3000 direct MONST. Expect ATC instructions.

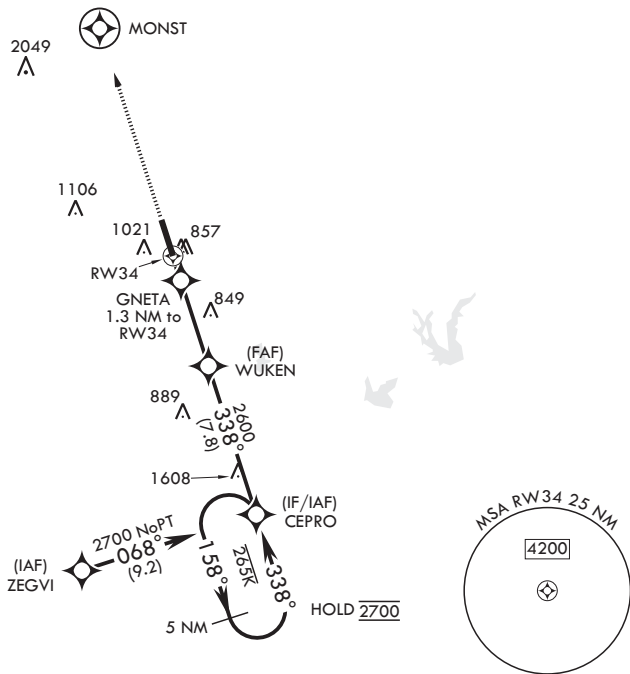
- ▼ \* When ALS inop, increase RVR to 40, vis to 3/4 miles.
- \*\* When ALS inop, increase RVR to 60, vis to 1 1/8 miles.
- \*\*\* When ALS inop, increase CAT AB RVR to 55, vis to 1 mile; CAT CDE RVR to 60, vis to 1 1/8 miles.



ATIS <b>120.45 273.5</b>	SAN ANTONIO APP CON <b>118.05 353.5</b>	KELLY TOWER <b>124.3 322.35</b>	GND CON <b>121.8 289.4</b>
-----------------------------	--	------------------------------------	-------------------------------

\*\*\*\* Circling NA E of Rwy 16-34.

For uncompensated Baro-VNAV systems, LNAV/VNAV NA below -16°C (3°F) or above 54°C (129°F).



3000 ↑ MONST	VGSI and descent angles not coincident (VGSI Angle 3.02/TCH 93).				ELEV 690	TDZE 660
RW34		GNETA 1.3 NM to RW34	WUKEN	CEPRO	5 NM Holding Pattern	
1120		2600	338°	158	2700	
1.3 NM		4.5 NM			GP 3.00° TCH 60	
CATEGORY	A	B	C	D	E	
LPV DA*	860/24		200	(200-½)		
LNAV/VNAV DA**	1080/40		420	(400-¾)		
LNAV MDA***	1080/24	420 (400-½)	1080/40	420	(400-¾)	
CIRCLING****	1200-1 510 (600-1)	1280-1 590 (600-1)	1340-1¼ 650 (700-1¼)	1900-3 1210 (1300-3)		

SAN ANTONIO, TEXAS  
Amdt 3 04SEP25

29°23'N - 98°35'W

KELLY FLD (KSKF)

# RNAV (GPS) RWY 34

SC-3, 11 JUN 2026 to 09 JUL 2026

SC-3, 11 JUN 2026 to 09 JUL 2026