

SNIDR TWO DEPARTURE (RNAV)

9200 NR 60 of 2020 NR 11 '8-CS

SAN ANTONIO DEP CON

125.7 290.225

ATIS

120.45 273.5

GND CON

121.8 289.4

KELLY TOWER

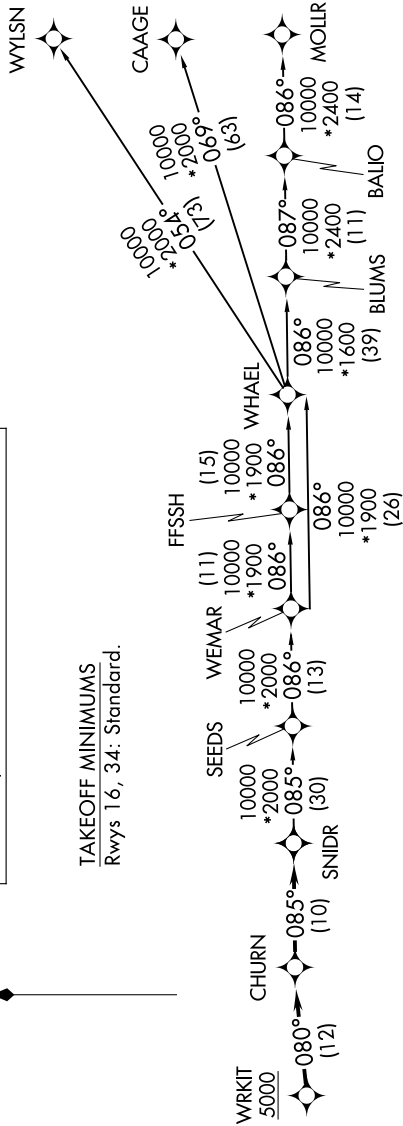
124.3 322.35

RNAV 1 - DME/DME/IRU or GPS.

RADAR required for non-GPS equipped aircraft.

RADAR required.

**TOP ALTITUDE:
ASSIGNED BY ATC**

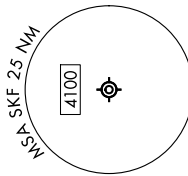
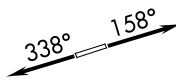


DEPARTURE ROUTE DESCRIPTION

▶ **TAKEOFF RUNWAY 16:** Climb on heading 158° or as assigned by ATC, for vectors to WRKIT, thence. . .
TAKEOFF RUNWAY 34: Climb on heading 338° or as assigned by ATC, for vectors to WRKIT, thence. . .

. . . on track 080° to CHURN, then on track 085° to SNIDR. Expect filed altitude 10 minutes after departure.

- BLUMS TRANSITION (SNIDR2.BLUMS)
- CAAGE TRANSITION (SNIDR2.CAAGE)
- FFSSH TRANSITION (SNIDR2.FFSSH)
- MOLLR TRANSITION (SNIDR2.MOLLR)
- SEEDS TRANSITION (SNIDR2.SEEDS)
- WEMAR TRANSITION (SNIDR2.WEMAR)
- WHAEL TRANSITION (SNIDR2.WHAEL)
- WYLSN TRANSITION (SNIDR2.WYLSN)



NOTE: Chart not to scale.

SNIDR TWO DEPARTURE (RNAV)