

(YODUH2.YODUH) 25219

AL-371 (FAA)

KELLY FLD (SKF)
SAN ANTONIO, TEXAS

YODUH TWO DEPARTURE (RNAV)

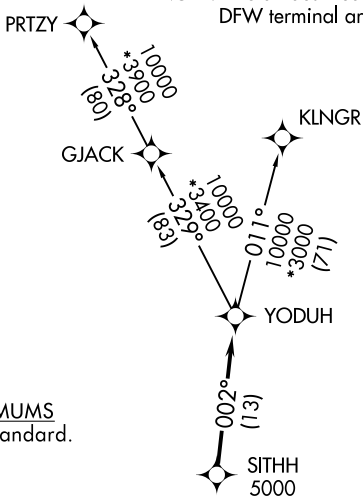
SAN ANTONIO DEP CON
125.7 290.225
ATIS
120.45 273.5
GND CON
121.8 289.4
KELLY TOWER
124.3 322.35

RNAV 1 - DME/DME IRU or GPS.

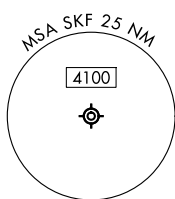
RADAR required for non-GPS equipped aircraft.
RADAR required.

**TOP ALTITUDE:
ASSIGNED BY ATC**

NOTE: Aircraft destined for airports north/northeast of DFW terminal area must file the KLNGR Transition.



TAKEOFF MINIMUMS
Rwys 16, 34: Standard.



NOTE: Chart not to scale.

DEPARTURE ROUTE DESCRIPTION

TAKEOFF RUNWAY 16: Climb on heading 158° or as assigned by ATC, for vectors to SITHH, thence. . .

TAKEOFF RUNWAY 34: Climb on heading 338° or as assigned by ATC, for vectors to SITHH, thence. . .

. . .on track 002° to YODUH, then on transition. Maintain ATC assigned altitude. Expect filed altitude 10 minutes after departure.

KLNGR TRANSITION (YODUH2.KLNGR)

PRTZY TRANSITION (YODUH2.PRTZY)

YODUH TWO DEPARTURE (RNAV)

(YODUH2.YODUH) 07AUG25

SAN ANTONIO, TEXAS
KELLY FLD (SKF)

SC-3, 11 JUN 2026 to 09 JUL 2026

SC-3, 11 JUN 2026 to 09 JUL 2026