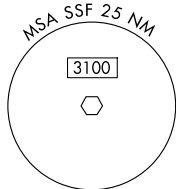


BOWIE EIGHT DEPARTURE

SAN ANTONIO DEP CON
125.7 290.225
ATIS
128.8
CLNC DEL (When twr closed)
121.7
GND CON
121.7 379.9
STINSON TOWER *
118.2 (CTAF) 379.9

RADAR required.
DME required.



SAN ANTONIO
116.8 SAT
Chan 115

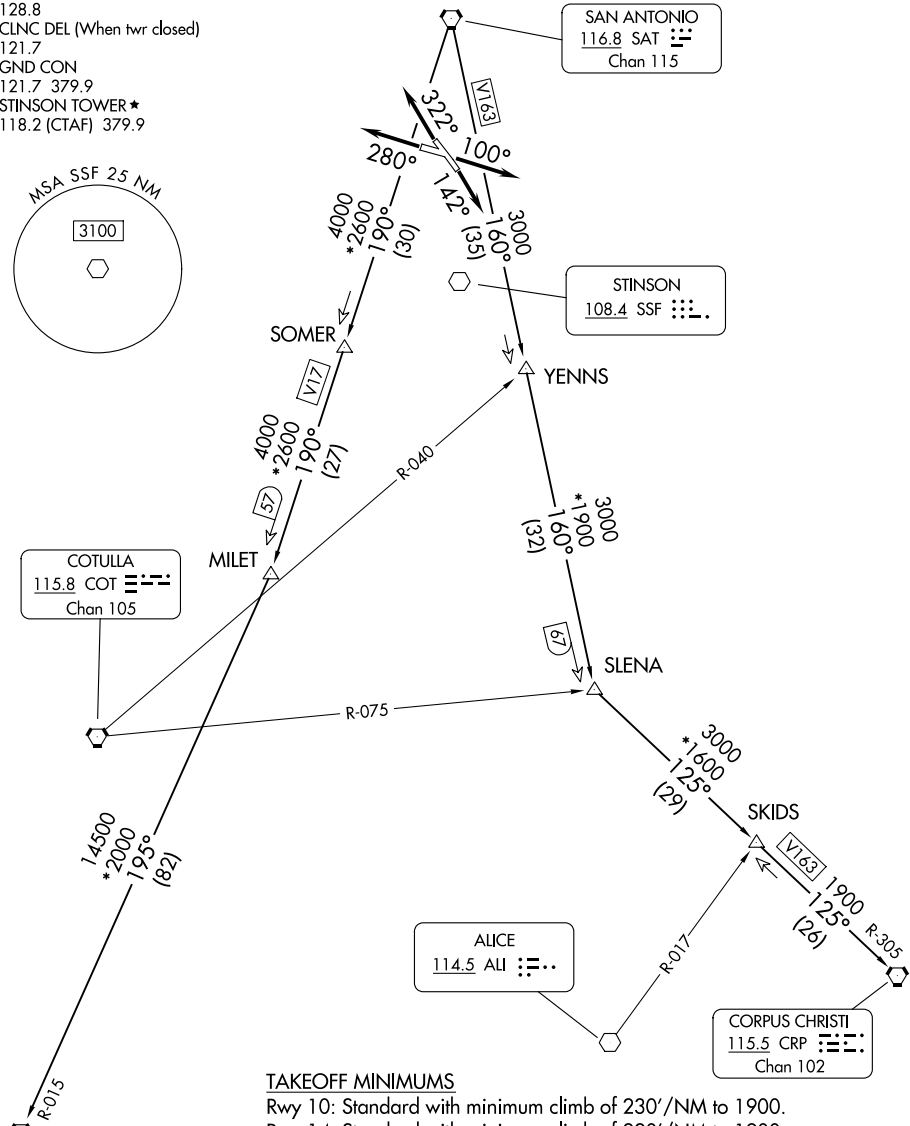
STINSON
108.4 SSF

COTULLA
115.8 COT
Chan 105

ALICE
114.5 ALI

CORPUS CHRISTI
115.5 CRP
Chan 102

LAREDO
117.4 LRD
Chan 121



TAKEOFF MINIMUMS

- Rwy 10: Standard with minimum climb of 230'/NM to 1900.
- Rwy 14: Standard with minimum climb of 220'/NM to 1900.
- Rwy 28: 300-1 $\frac{5}{8}$ or standard with minimum climb of 230'/NM to 900, or alternatively, with standard takeoff minimums and a normal 200'/NM climb gradient, takeoff must occur no later than 1800' prior to DER.
- Rwy 32: Standard with minimum climb of 230'/NM to 1700.

NOTE: Chart not to scale.

(CONTINUED ON FOLLOWING PAGE)

SC-3, 11 JUN 2026 to 09 JUL 2026

SC-3, 11 JUN 2026 to 09 JUL 2026