

SW-3, 11 JUN 2026 to 09 JUL 2026

SOCAL APP CON
124.35 279.625
KNZY ATIS *
317.8
SAN-D-ATIS
134.8

NOTE: Turboprop aircraft only.
NOTE: RADAR required.
NOTE: When SAN arrivals are using Rwy 9, aircraft can expect to depart and re-enter the TCA southwest of PGY VORTAC.

TURBOJET VERTICAL NAVIGATION

PLANNING INFORMATION

TNP, EED and PKE transitions
expect FL240 at SALTN
expect 12000 at CARUL

OCEANSIDE
115.3 OCN
Chan 100

LOCALIZER
I-SAN
111.55
Chan 52(Y)

MISSION BAY
117.8 MZB
Chan 125

LOCALIZER
I-UBR
110.9
Chan 46

NEEDLES
115.2 EED
Chan 99

TWENTYNINE PALMS
114.2 TNP
Chan 89

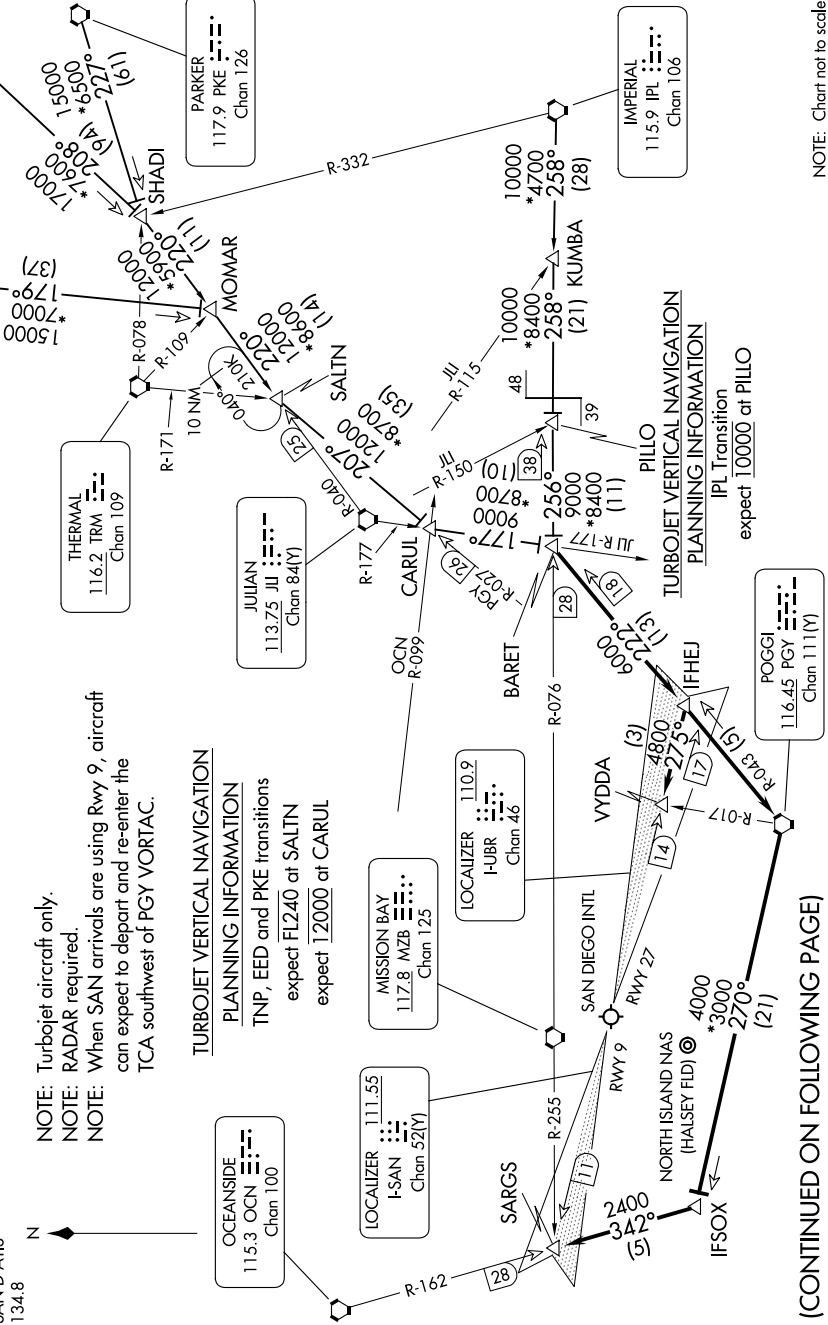
THERMAL
116.2 TRM
Chan 109

JULIAN
113.75 JIJ
Chan 84(Y)

PARKER
117.9 PKE
Chan 126

IMPERIAL
115.9 IPL
Chan 106

POGGI
116.45 PGI
Chan 111(Y)



(CONTINUED ON FOLLOWING PAGE)

NOTE: Chart not to scale.

SW-3, 11 JUN 2026 to 09 JUL 2026