

(SERFR.WWAVS2) 24193

# WWAVS TWO ARRIVAL (RNAV)

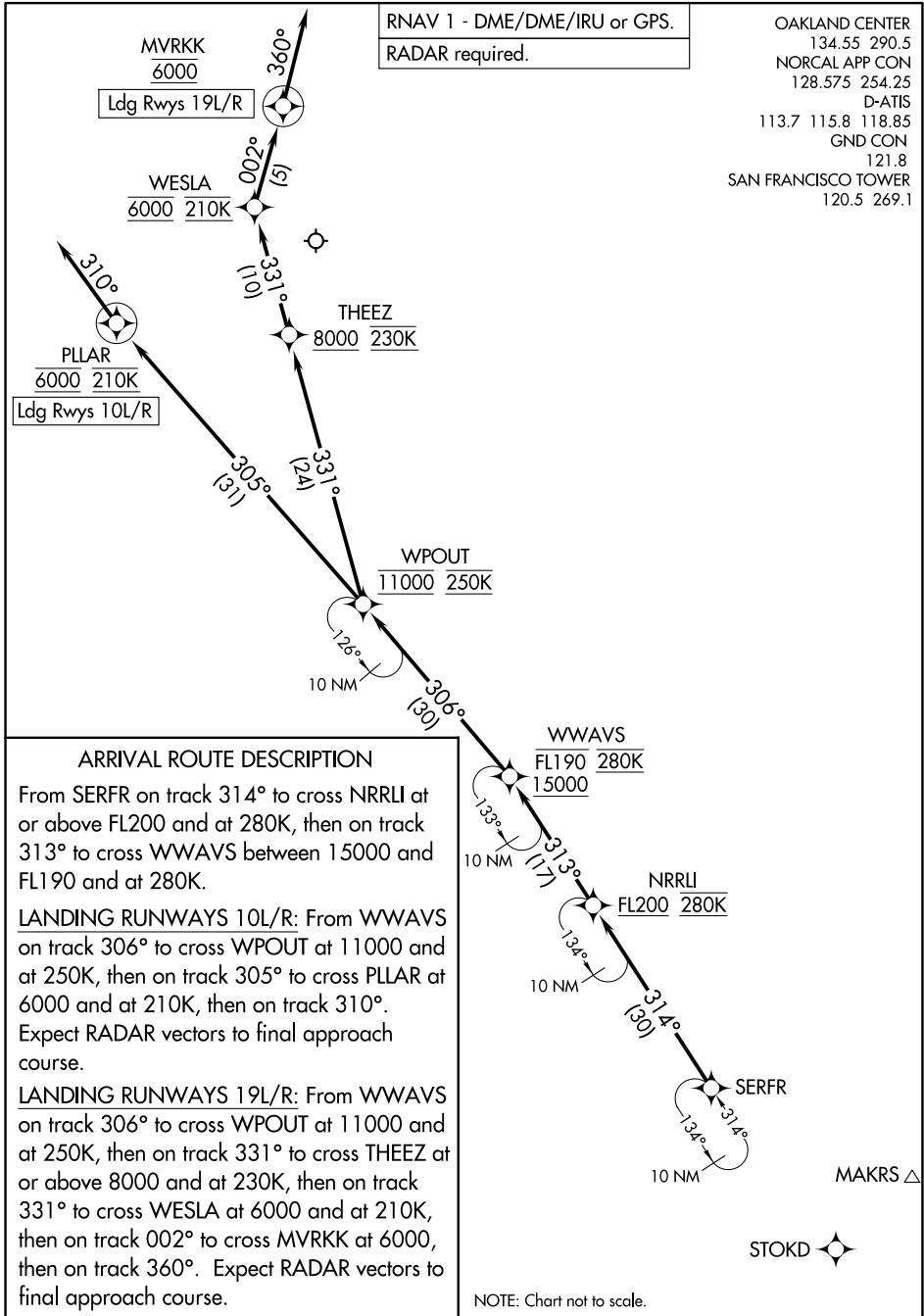
AL-375 (FAA)

SAN FRANCISCO INTL (SFO)

SAN FRANCISCO, CALIFORNIA

RNAV 1 - DME/DME/IRU or GPS.
RADAR required.

OAKLAND CENTER  
 134.55 290.5  
 NORCAL APP CON  
 128.575 254.25  
 D-ATIS  
 113.7 115.8 118.85  
 GND CON  
 121.8  
 SAN FRANCISCO TOWER  
 120.5 269.1



### ARRIVAL ROUTE DESCRIPTION

From SERFR on track 314° to cross NRRLI at or above FL200 and at 280K, then on track 313° to cross WWAVS between 15000 and FL190 and at 280K.

LANDING RUNWAYS 10L/R: From WWAVS on track 306° to cross WPOUT at 11000 and at 250K, then on track 305° to cross PLLAR at 6000 and at 210K, then on track 310°. Expect RADAR vectors to final approach course.

LANDING RUNWAYS 19L/R: From WWAVS on track 306° to cross WPOUT at 11000 and at 250K, then on track 331° to cross THEEZ at or above 8000 and at 230K, then on track 331° to cross WESLA at 6000 and at 210K, then on track 002° to cross MVRKK at 6000, then on track 360°. Expect RADAR vectors to final approach course.

NOTE: Chart not to scale.

SW-2, 11 JUN 2026 to 09 JUL 2026

SW-2, 11 JUN 2026 to 09 JUL 2026

# WWAVS TWO ARRIVAL (RNAV)

(SERFR.WWAVS2) 11JUL24

SAN FRANCISCO, CALIFORNIA  
SAN FRANCISCO INTL (SFO)