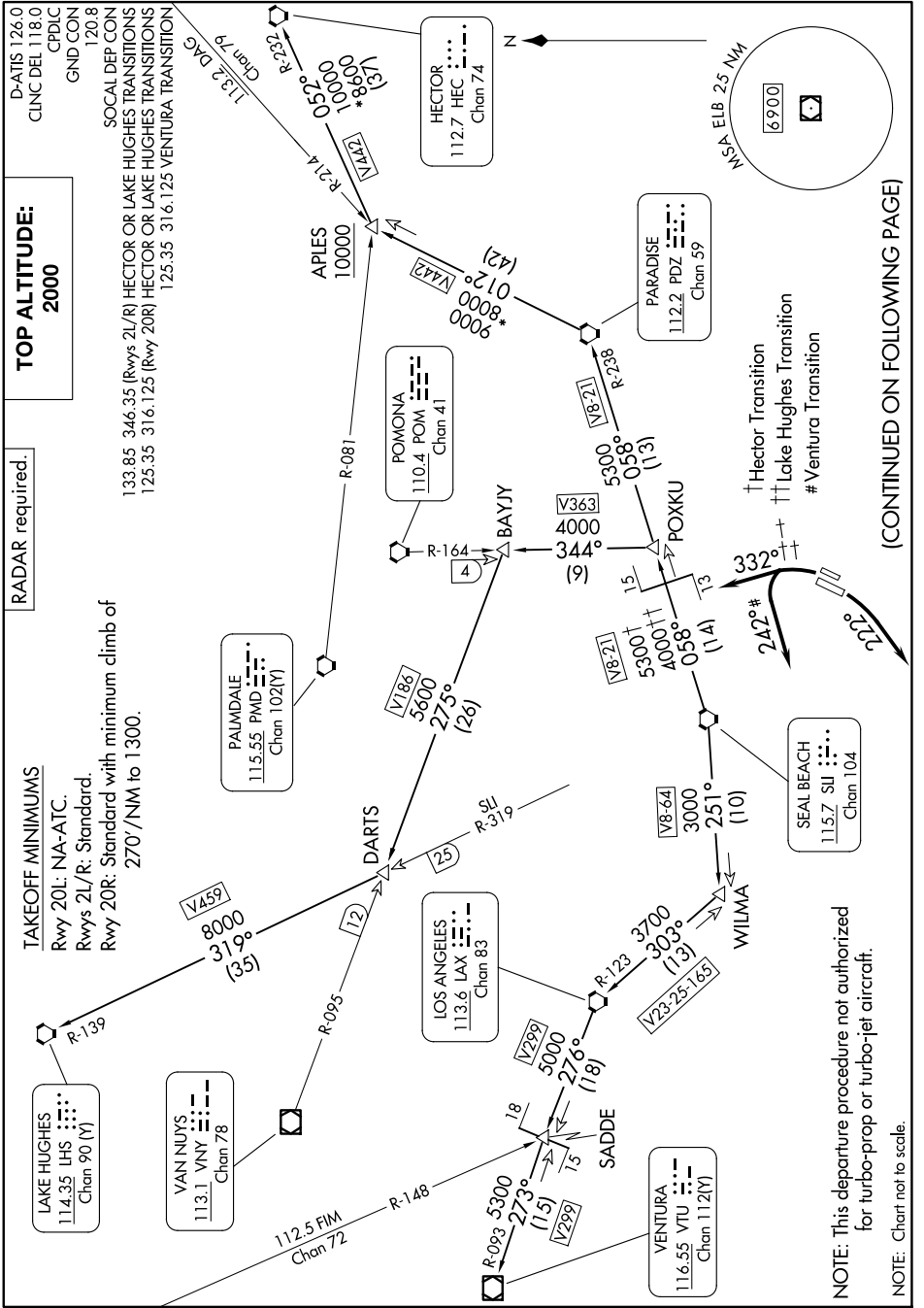


# ANAHEIM TWO DEPARTURE

JOHN WAYNE/ORANGE COUNTY (SNA)  
SANTA ANA, CALIFORNIA

AL-377 (FAA)

9200 JUN 60 2026 09 11 '8-SW



(CONTINUED ON FOLLOWING PAGE)

SW-3, 11 JUN 2026 to 09 JUL 2026

NOTE: This departure procedure not authorized for turbo-prop or turbo-jet aircraft.

NOTE: Chart not to scale.

**TOP ALTITUDE:**  
**2000**

RADAR required.

**TAKEOFF MINIMUMS**  
Rwy 20L: NA-ATC.  
Rwys 2L/R: Standard.  
Rwy 20R: Standard with minimum climb of 270'/NM to 1300.

D-ATIS 126.0  
CLNC DEL 118.0  
CPDIC  
GND CON 120.8  
SOCAL DEP CON  
133.85 346.35 (Rwys 2L/R) HECTOR OR LAKE HUGHES TRANSITIONS  
125.35 316.125 (Rwy 20R) HECTOR OR LAKE HUGHES TRANSITIONS  
125.35 316.125 VENTURA TRANSITION

PALMDALE  
115.55 PMD  
Chan 102(Y)

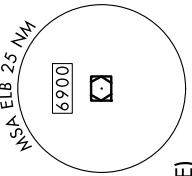
POMONA  
110.4 POM  
Chan 41

HECTOR  
112.7 HEC  
Chan 74

PARADISE  
112.2 PDZ  
Chan 59

SEAL BEACH  
115.7 SB  
Chan 104

VENTURA  
116.55 VTU  
Chan 112(Y)



† Hector Transition  
‡ Lake Hughes Transition  
# Ventura Transition