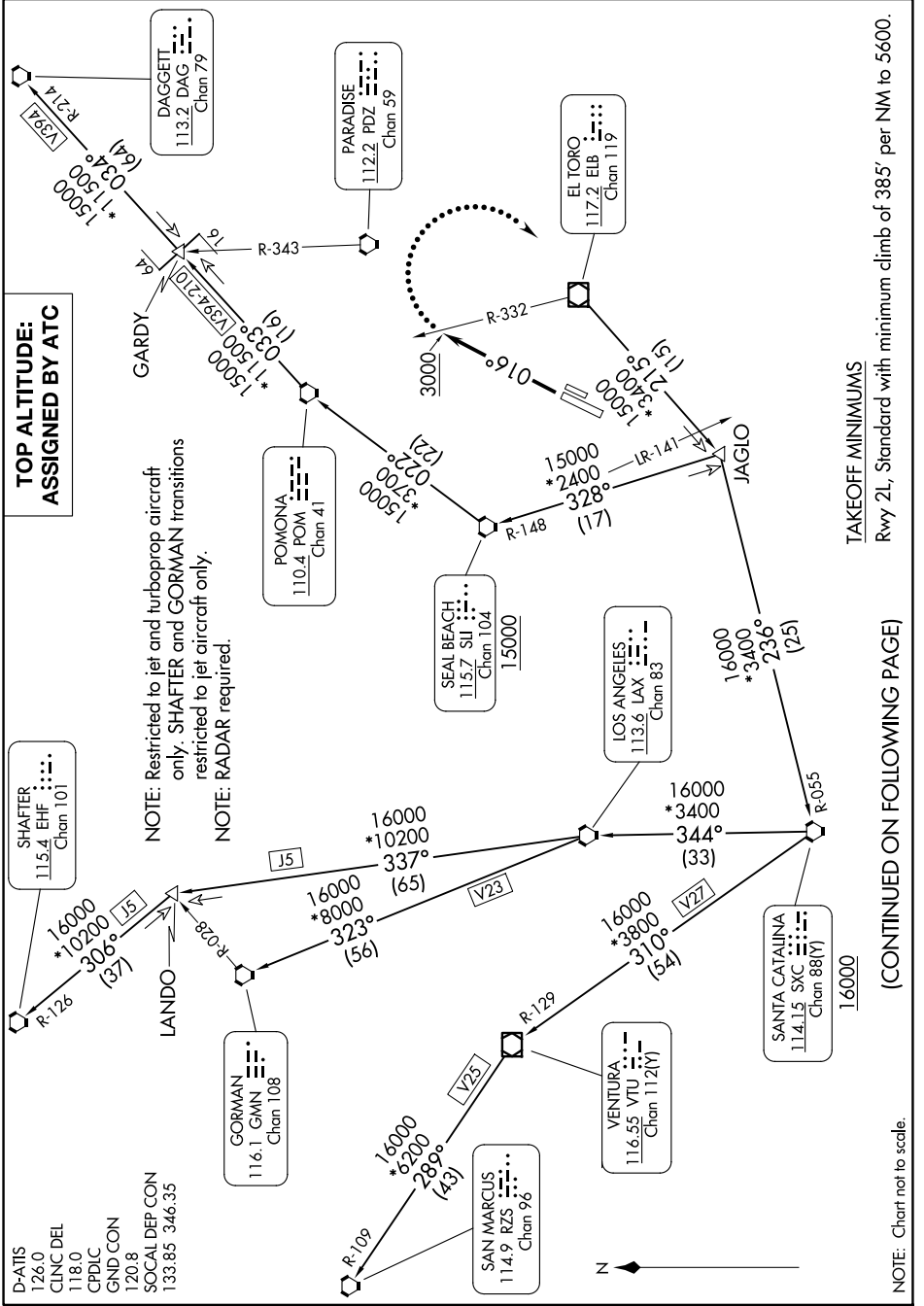


# IRVINE FIVE DEPARTURE

SW-3, 11 JUN 2026 to 09 JUL 2026



# IRVINE FIVE DEPARTURE

TAKEOFF MINIMUMS  
Rwy 2L, Standard with minimum climb of 385' per NM to 5600.

(CONTINUED ON FOLLOWING PAGE)

NOTE: Chart not to scale.

SW-3, 11 JUN 2026 to 09 JUL 2026