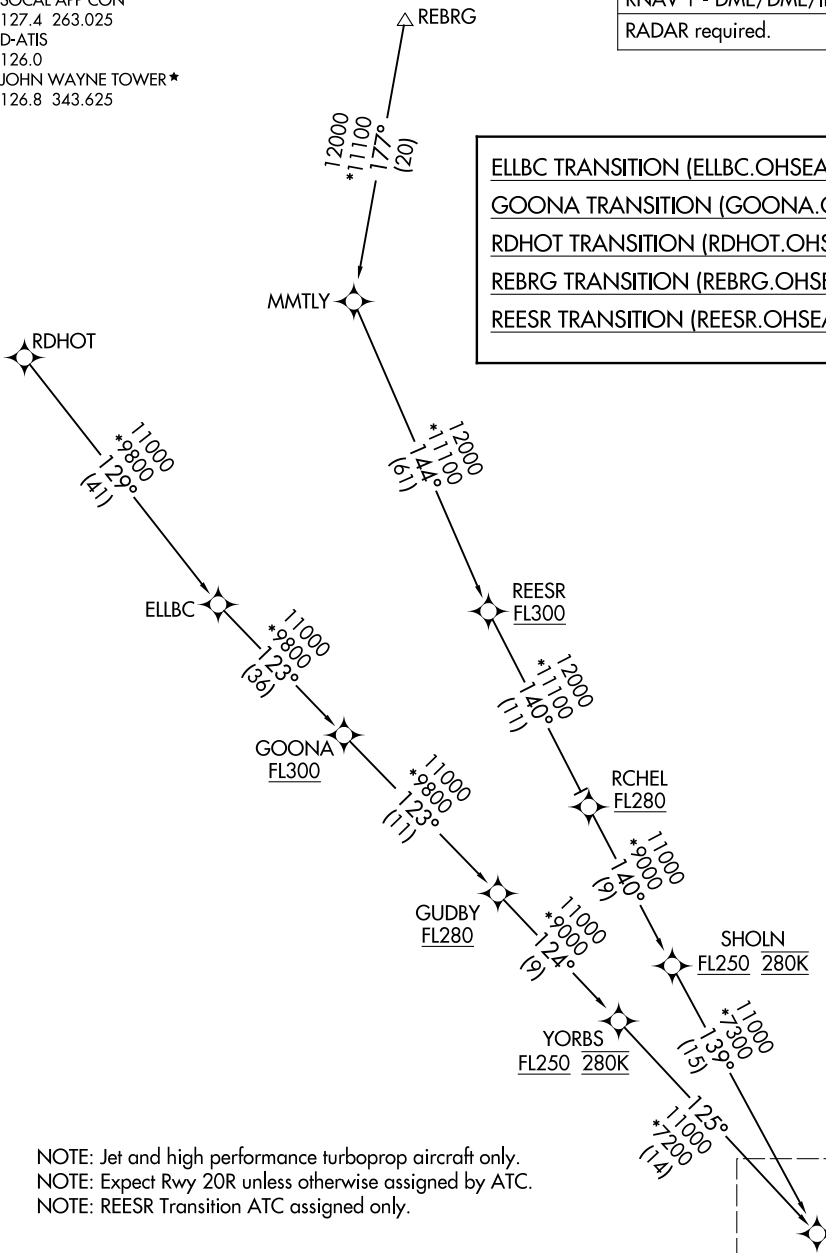


# OHSEA THREE ARRIVAL (RNAV) Transition Routes

SOCAL APP CON  
 127.4 263.025  
 D-ATIS  
 126.0  
 JOHN WAYNE TOWER ★  
 126.8 343.625

RNAV 1 - DME/DME/IRU or GPS.  
 RADAR required.

- ELLBC TRANSITION (ELLBC.OHSEA3)
- GOONA TRANSITION (GOONA.OHSEA3)
- RDHOT TRANSITION (RDHOT.OHSEA3)
- REBRG TRANSITION (REBRG.OHSEA3)
- REESR TRANSITION (REESR.OHSEA3)



NOTE: Jet and high performance turboprop aircraft only.  
 NOTE: Expect Rwy 20R unless otherwise assigned by ATC.  
 NOTE: REESR Transition ATC assigned only.

(CONTINUED ON FOLLOWING PAGE)

NOTE: Chart not to scale.

See following page for Arrival Routes.

SW-3, 11 JUN 2026 to 09 JUL 2026

SW-3, 11 JUN 2026 to 09 JUL 2026