

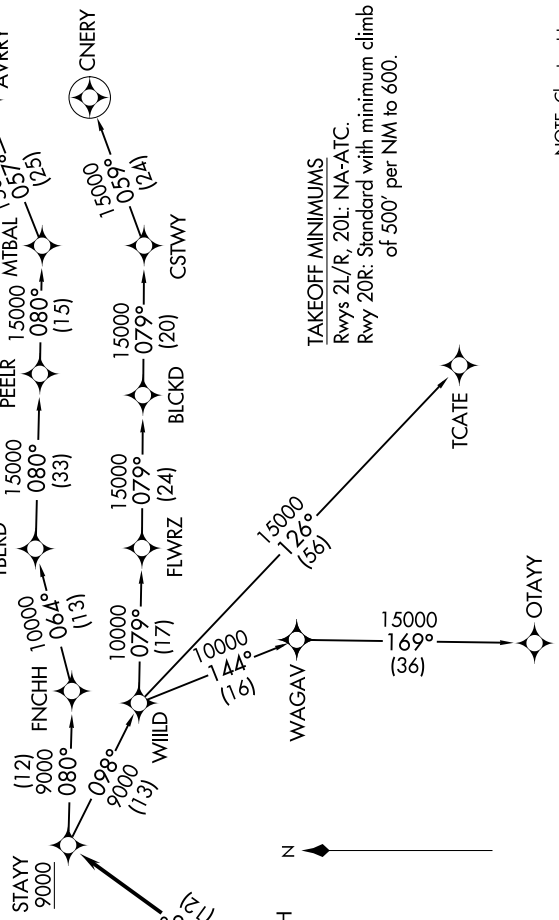
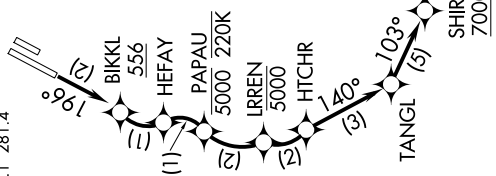
9200 TNR 60 01 2020 NNR 11 'E-WS

D-ATIS
126.0
CLNC DEL
118.0
CPDC
GND CON
120.8
JOHN WAYNE TOWER *
126.8 343.625
SOCAL DEP CON
128.1 281.4

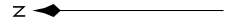
NOTE: RNP 1.
NOTE: RF required.
NOTE: GPS required.
NOTE: RADAR required.
NOTE: Turbojet only.
NOTE: Parachute jumping all hours, 14000 and below,
north of route between STAYY and FNCHH.
NOTE: Do not file-To be assigned by ATC.

TOP ALTITUDE:
13000

TRUE
LVLL
WURMO



TAKEOFF MINIMUMS
Rwys 2L/R, 20L: NA-ATC.
Rwy 20R: Standard with minimum climb
of 500' per NM to 600.



NOTE: Chart not to scale.

(NARRATIVE ON FOLLOWING PAGE)

SW-3, 11 JUN 2026 to 09 JUL 2026