

26134

AIRPORT DIAGRAM

SANTA MARIA PUB/CAPT G ALLAN HANCOCK FLD (SMX)
AL-379 (FAA)
SANTA MARIA, CALIFORNIA

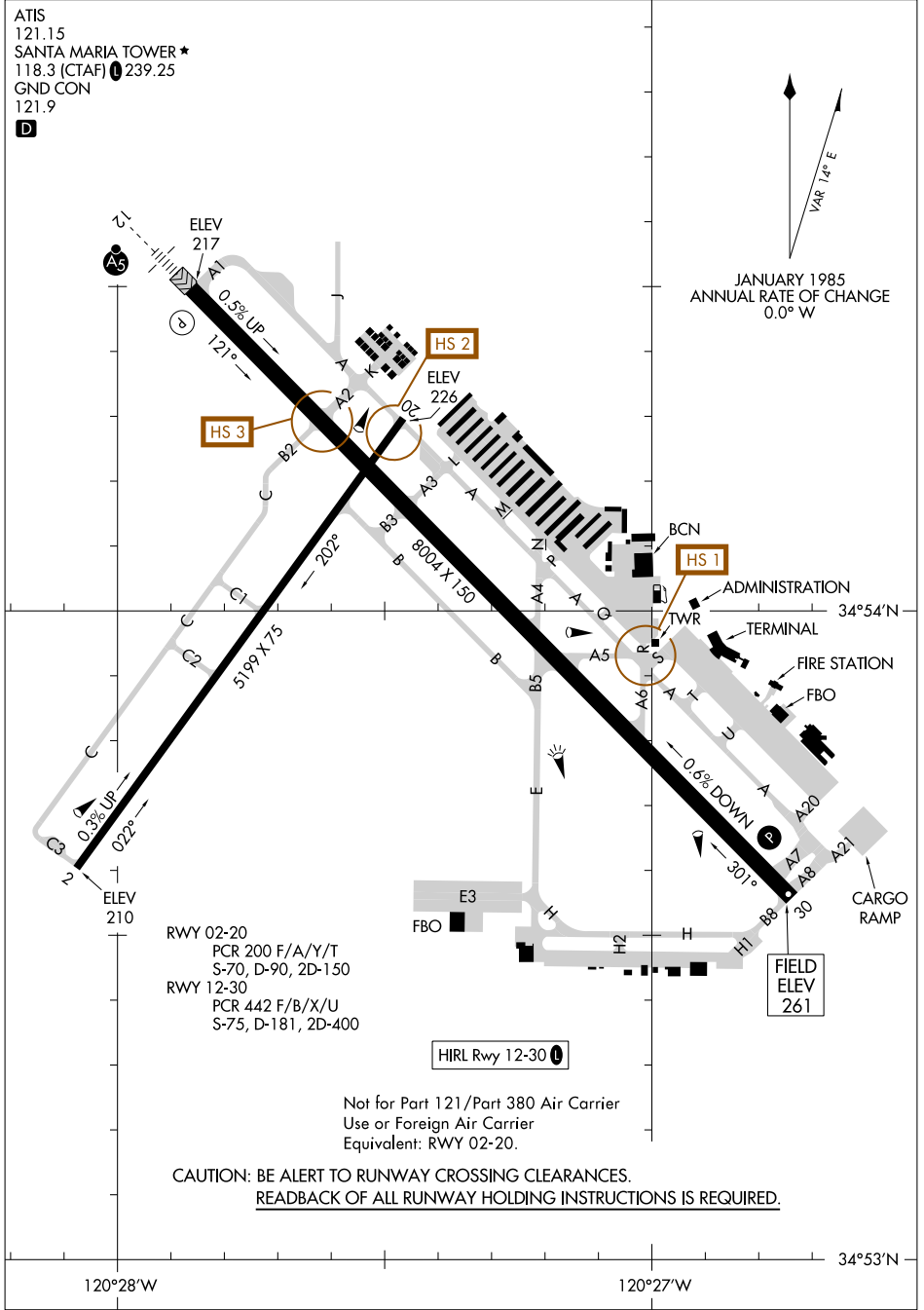
ATIS
121.15
SANTA MARIA TOWER ★
118.3 (CTAF) 239.25
GND CON 121.9

D

VAR 1° E
JANUARY 1985
ANNUAL RATE OF CHANGE
0.0° W

SW-3, 11 JUN 2026 to 09 JUL 2026

SW-3, 11 JUN 2026 to 09 JUL 2026



RWY 02-20
PCR 200 F/A/Y/T
S-70, D-90, 2D-150

RWY 12-30
PCR 442 F/B/X/U
S-75, D-181, 2D-400

HIRL Rwy 12-30

Not for Part 121/Part 380 Air Carrier
Use or Foreign Air Carrier
Equivalent: RWY 02-20.

CAUTION: BE ALERT TO RUNWAY CROSSING CLEARANCES.
READBACK OF ALL RUNWAY HOLDING INSTRUCTIONS IS REQUIRED.

AIRPORT DIAGRAM

26134

SANTA MARIA, CALIFORNIA
SANTA MARIA PUB/CAPT G ALLAN HANCOCK FLD (SMX)