

LOC/DME I-SMX	APP CRS	Rwy Ldg	<b>8004</b>
<b>108.9</b>	<b>120°</b>	TDZE	<b>230</b>
Chan <b>26</b>		Apt Elev	<b>261</b>

# ILS or LOC RWY 12

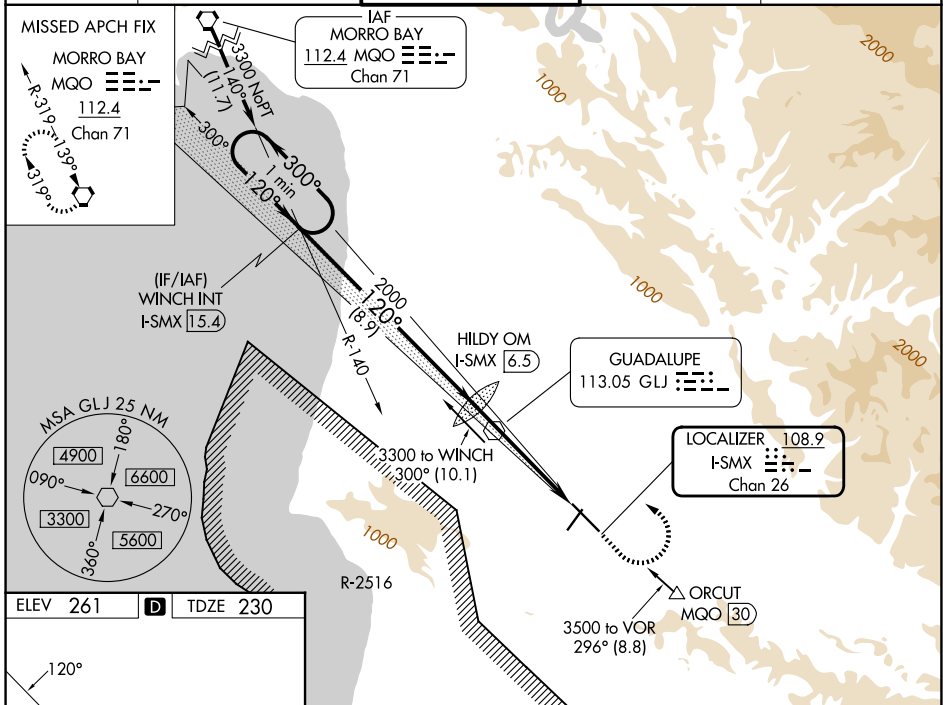
SANTA MARIA PUB/CAPT G ALLAN HANCOCK FLD (SMX)

**⚠** Night Landing: Rwy 2 NA. VDP NA when using San Luis Obispo altimeter setting. When local altimeter setting not received, use San Luis Obispo altimeter setting and increase DA to 489 feet; increase all MDA 60 feet and S-LOC visibility Cat C and D to RVR 5500. For inop MALS, increase S-LOC 12 Cat C/D visibility to 1½ mile.  
 # RVR 1800 authorized with use of FD or AP or HUD to DA; NA when using San Luis Obispo altimeter setting.

**MALS**

**MISSED APPROACH:**  
 Climb to 800, then climbing left turn to 5000 direct MQO VORTAC and hold.

ATIS	SANTA BARBARA APP CON *	SANTA MARIA TOWER *	GND CON	UNICOM
<b>121.15</b>	<b>124.15 327.8</b>	<b>118.3 (CTAF) 239.25</b>	<b>121.9</b>	<b>122.95</b>



ELEV 261	<b>D</b>	TDZE 230
----------	----------	----------

HIRL Rwy 12-30

FAF to MAP 5 NM					
Knots	60	90	120	150	180
Min:Sec	5:00	3:20	2:30	2:00	1:40

WINDCH	One Minute Holding Pattern	HILDY OM	800	5000	MQO
I-SMX 1.5.4		I-SMX 6.5	↑	↶	⬡
3300	120°	1886	*LOC only.		
GS 3.00°	2000	1.2 NM	*I-SMX 2.7	I-SMX 1.5	
TCH 55	8.9 NM	3.8 NM			
CATEGORY	A	B	C	D	
S-ILS 12#	430/24 200 (200-½)				
S-LOC 12	680/24	450 (500-½)	680/50	450 (500-1)	
CIRCLING	860-1	1000-1	1420-3	1520-3	
	599 (600-1)	739 (800-1)	1159 (1200-3)	1259 (1300-3)	

SW-3, 11 JUN 2026 to 09 JUL 2026

SW-3, 11 JUN 2026 to 09 JUL 2026