

| | | | |
|--|------------------------|---|-------------|
| WAAS CH 77927 W12A | APP CRS 121° | Rwy Ldg TDZE 230 Apt Elev 261 | 8004 |
|--|------------------------|---|-------------|

RNAV (GPS) RWY 12

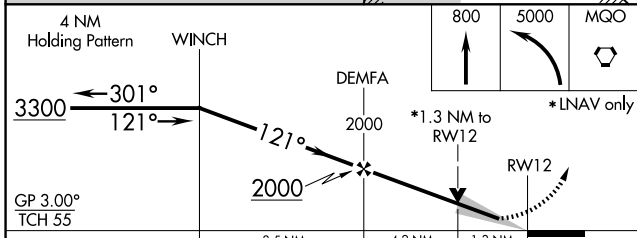
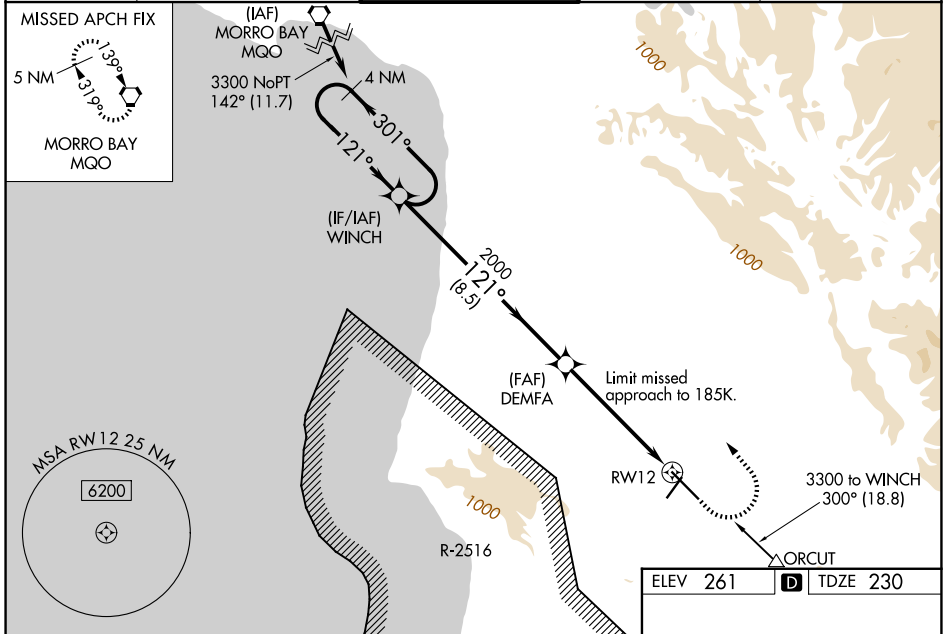
SANTA MARIA PUB/CAPT G ALLAN HANCOCK FLD (SMX)

⚠ Circling Rwy 2 NA at night. Baro-VNAV and VDP NA when using San Luis Obispo altimeter setting. For uncompensated Baro-VNAV systems, LNAV/VNAV NA below -15°C (5°F) or above 42°C (107°F). DME/DME RNP-0.3 NA. When local altimeter setting not received, use San Luis Obispo altimeter setting and increase LPV DA to 489 feet; increase LNAV/VNAV DA to 622 feet and all visibilities to RVR 3500; increase all MDAs 60 feet and LNAV visibility Cat C/D to RVR 5500. For inop MALSR, increase LNAV Cat C/D visibility to 1½ mile. # RVR 1800 authorized with use of FD or AP or HUD to DA, NA when using Vandenberg altimeter setting.

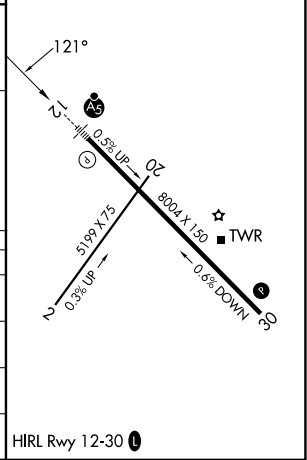
MALSR
AS

MISSED APPROACH:
Climb to 800 then climbing left turn to 5000 direct MQO VORTAC and hold.

| | | | | |
|-----------------------|---|--|-------------------------|-------------------------|
| ATIS 121.15 | SANTA BARBARA APP CON* 124.15 327.8 | SANTA MARIA TOWER* 118.3 (CTAF) 0 239.25 | GND CON 121.9 | UNICOM 122.95 |
|-----------------------|---|--|-------------------------|-------------------------|



| | |
|----------|----------|
| ELEV 261 | TDZE 230 |
|----------|----------|



| CATEGORY | A | B | C | D |
|--------------|--------------------|--------------------|----------------------|----------------------|
| LPV DA# | 430/24 200 (200-½) | | | |
| LNAV/VNAV DA | 563/32 333 (400-⅝) | | | |
| LNAV MDA | 680/24 450 (500-½) | 680/50 450 (500-1) | | |
| CIRCLING | 860-1 599 (600-1) | 1000-1 739 (800-1) | 1420-3 1159 (1200-3) | 1540-3 1279 (1300-3) |

HIRL Rwy 12-30

RNAV (GPS) RWY 12

SW-3, 11 JUN 2026 to 09 JUL 2026

SW-3, 11 JUN 2026 to 09 JUL 2026