

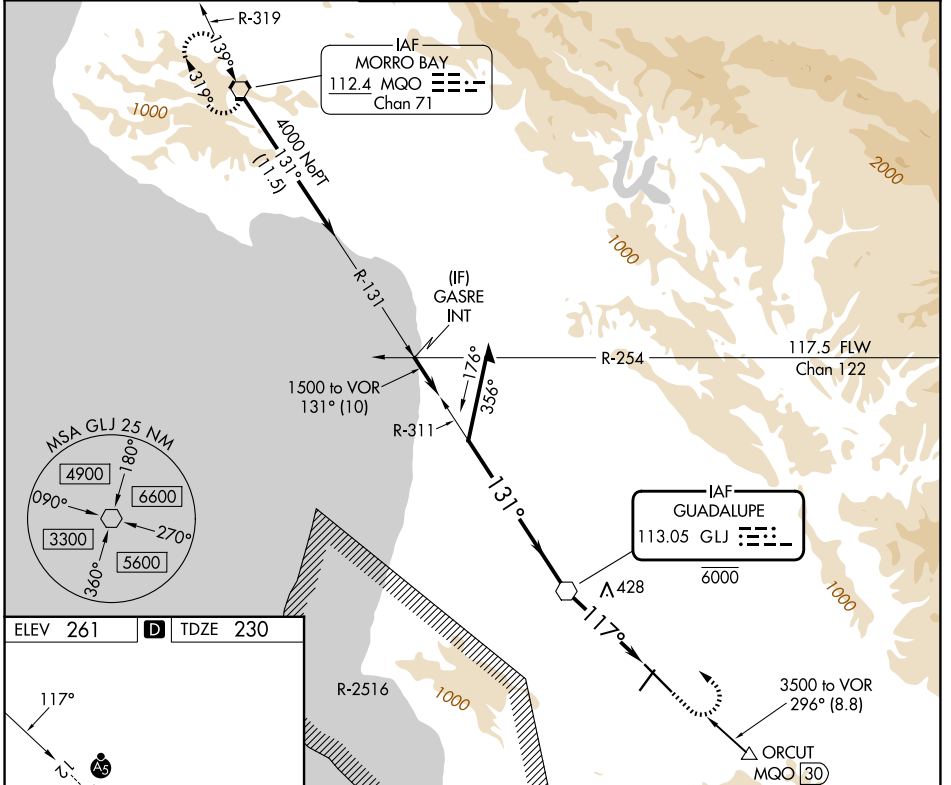
VOR GLJ 113.05	APP CRS 117°	Rwy Ldg TDZE Apt Elev	8004 230 261
--------------------------	------------------------	-----------------------------	---

VOR RWY 12

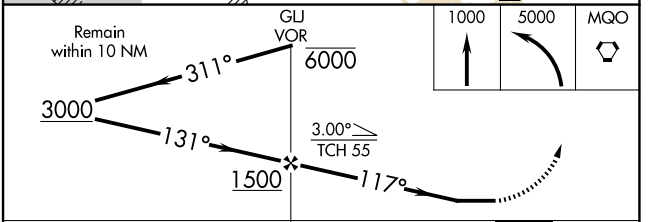
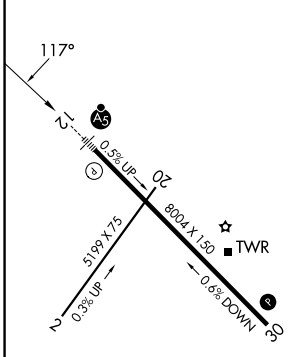
SANTA MARIA PUB/CAPT G ALLAN HANCOCK FLD (SMX)

<p>⚠ Circling Rwy 2 NA at night. When local altimeter setting not received, use SBP altimeter setting and increase all MDAs 60 feet and S-12 visibility Cat C/D to 1 ¼ SM. For inop ALS when using SBP altimeter setting, increase S-12 Cat C/D visibility to 1 ½ SM. For inop ALS, increase S-12 Cat C/D visibility to 1 ¾ SM.</p>	<p>MALSR</p>	<p>MISSED APPROACH: Climb to 1000 then climbing left turn to 5000 direct MQO VORTAC and hold.</p>

ATIS 121.15	SANTA BARBARA APP CON* 124.15 327.8	SANTA MARIA TOWER* 118.3 (CTAF) 239.25	GND CON 121.9	UNICOM 122.95
-----------------------	---	--	-------------------------	-------------------------



ELEV 261	D	TDZE 230
----------	----------	----------



	A	B	C	D
S-12	740/24	510 (500-½)	740/55	510 (500-1)
CIRCLING	860-1 599 (600-1)	1000-1 739 (800-1)	1420-3 1159 (1200-3)	NA

VOR RWY 12

SW-3, 11 JUN 2026 to 09 JUL 2026

SW-3, 11 JUN 2026 to 09 JUL 2026