

ILS or LOC RWY 28

| | | |
|---|-------------------------|--|
| LOC/DME I-SVN 109.5 Chan 32 | APCH CRS 276° | Rwy Idg 11,393 TDZE 41 Arpt Elev 41 |
|---|-------------------------|--|

[USA]

HUNTER AAF (KSVN)

DME required

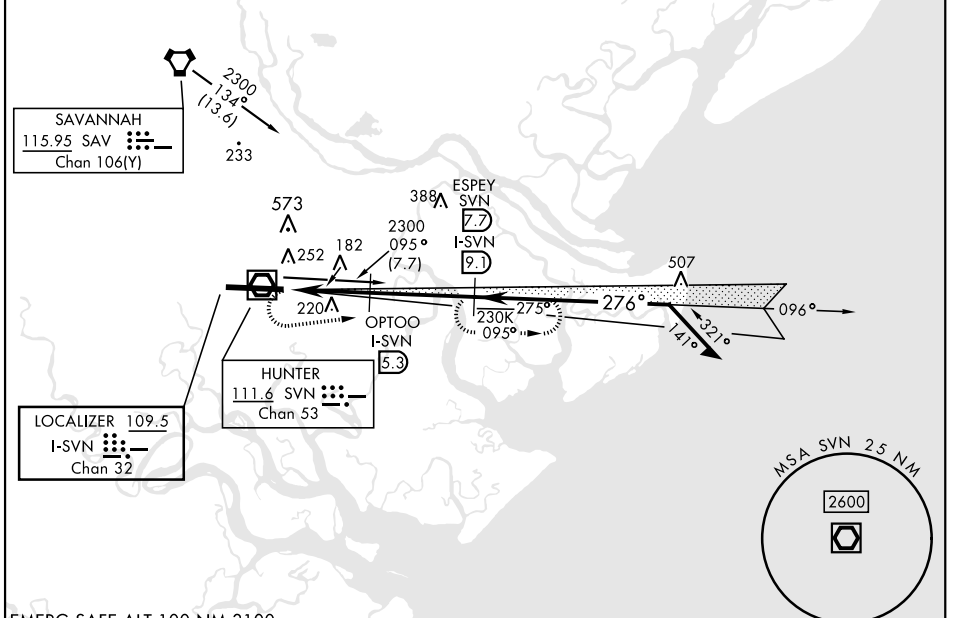
▼ * When ALS inop, increase RVR to 40, vis to ¾ mile.
 ** When ALS inop, increase CAT AB RVR to 55, vis to 1 mile, CAT CD vis to 1¼ miles.
 *** When ALS inop, increase CAT AB RVR to 55, vis to 1 mile, CAT CD vis to 1½ miles.



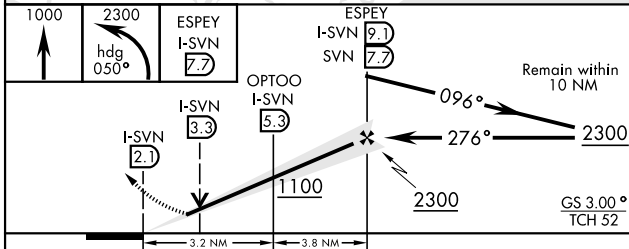
MISSED APPROACH: Climb to 1000, then climbing left turn to 2300 heading 050° and on SVN VOR/DME R-095 to ESPEY/ SVN 7.7 DME and hold.

| | | | |
|----------------------------------|--|--|-----------------------------------|
| ATIS ★ 127.525 323.125 | SAVANNAH APP CON ★ 120.4 353.775 | TOWER ★ 124.975 (CTAF) 0 279.575 | GND CON ★ 121.8 291.675 |
|----------------------------------|--|--|-----------------------------------|

**** Circling not authorized for CAT CD N of Rwy 10-28.



EMERG SAFE ALT 100 NM 3100



| | |
|---------|---------|
| ELEV 41 | TDZE 41 |
|---------|---------|

