

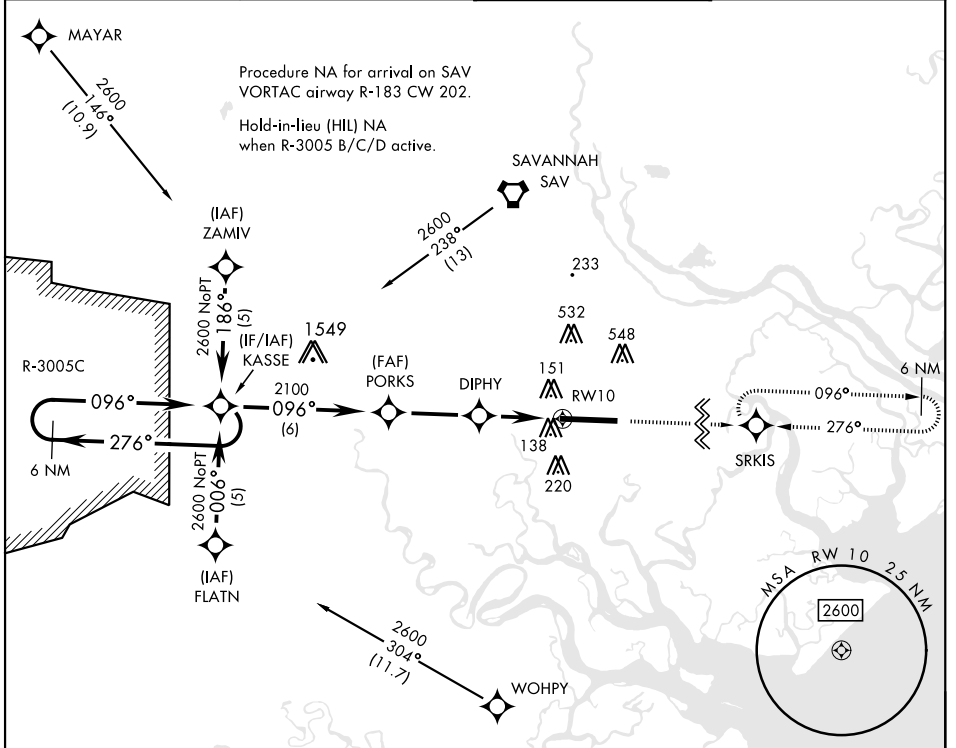
# RNAV (GPS) RWY 10

APCH CRS	Rwy Idg	11,393
096°	TDZE	26
	Arprt Elev	41

[USA]

HUNTER AAF (KSVN)

RNP APCH-GPS		<p>MISSED APPROACH: Climb to 2500 direct SRKIS and hold.</p>	
RADAR required when R-3005 B/C/D active.			
<p>▼ *When ALS inop, increase CAT AB vis to 1 mile; CAT CD vis to 1¼ miles. **Circling not authorized N of Rwy 10-28 for CAT D.</p>			
ATIS★	SAVANNAH APP CON★	TOWER★	GND CON★
127.525 323.125	120.4 353.775	124.975 (CTAF) 0 279.575	121.8 291.675



		ELEV	41	TDZE	26
CATEGORY	A	B	C	D	
LNAV MDA*	460-1	434	(500-1)		
CIRCLING**	600-1	559 (600-1)	920-2½ 879 (900-2½)	920-2¾ 879 (900-2¾)	

# RNAV (GPS) RWY 10

SE-4, 11 JUN 2026 to 09 JUL 2026

SE-4, 11 JUN 2026 to 09 JUL 2026