

# VOR/DME RWY 28

VOR/DME SVN <b>111.6</b> Chan <b>53</b>	APCH CRS <b>282°</b>	Rwy Idg <b>11,393</b> TDZE <b>41</b> Arpt Elev <b>41</b>
---	-------------------------	--

[USA]

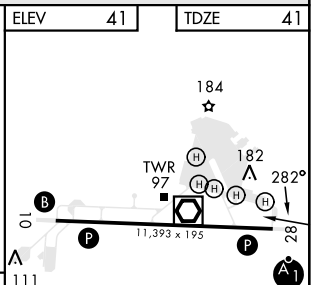
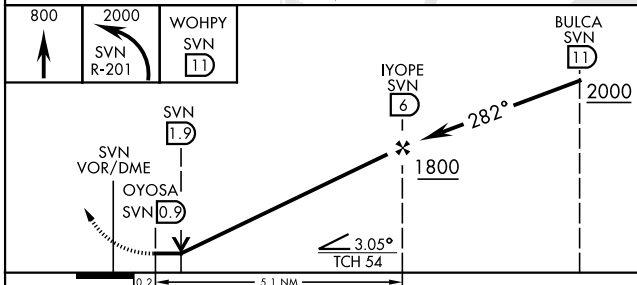
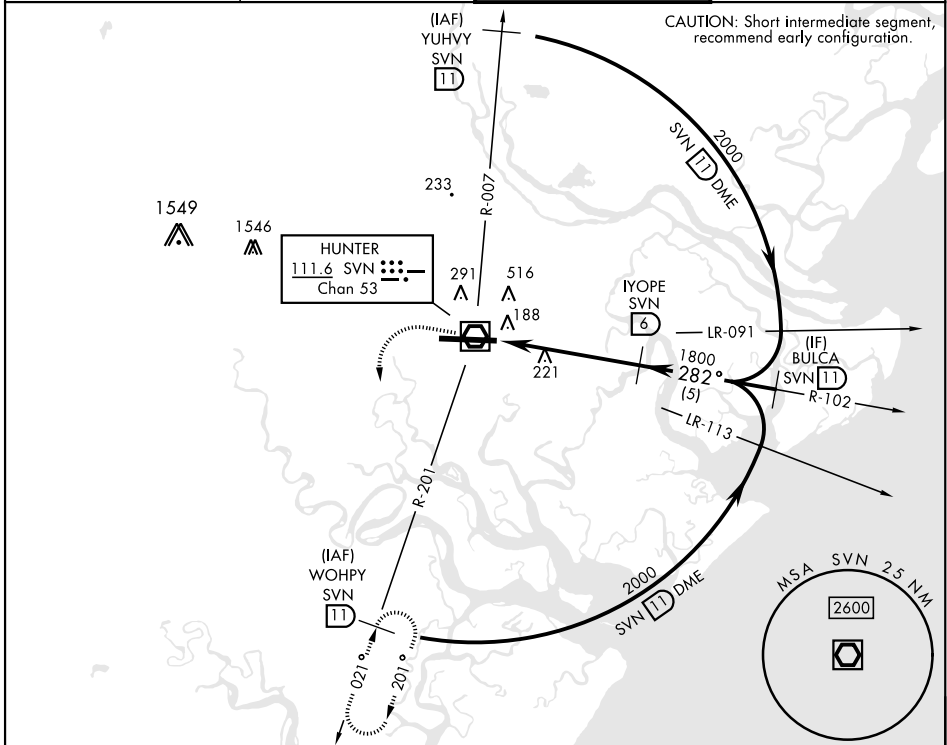
HUNTER AAF (KSVN)

**▲** \*When ALS inop, increase CAT AB RVR to 55, vis to 1 mile; CAT CD vis to 1½ miles.  
**\*\*** Circling not authorized N of Rwy 10-28 for CAT D.

ALSF-1

MISSED APPROACH: Climb to 800, then climbing left turn to 2000 via SVN VOR/DME R-201 to WOHPY/11 DME and hold.

ATIS ★ <b>127.525 323.125</b>	SAVANNAH APP CON ★ <b>120.4 353.775</b>	TOWER ★ <b>124.975 (CTAF) 0 279.575</b>	GND CON ★ <b>121.8 291.675</b>
----------------------------------	--	--	-----------------------------------



CATEGORY	A	B	C	D
S-28*	580/24 539 (600-½)		580/55 539 (600-1)	
CIRCLING**	600-1 559 (600-1)		920-2½ 879 (900-2½)	920-2¾ 879 (900-2¾)

HIRL Rwy 10-28

REL Rwy 10

# VOR/DME RWY 28

SE-4, 11 JUN 2026 to 09 JUL 2026

SE-4, 11 JUN 2026 to 09 JUL 2026