

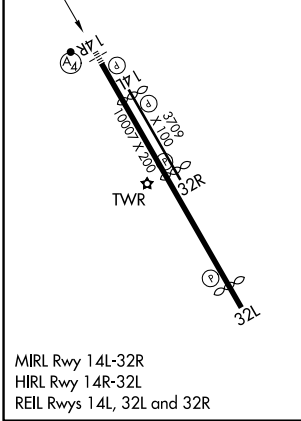
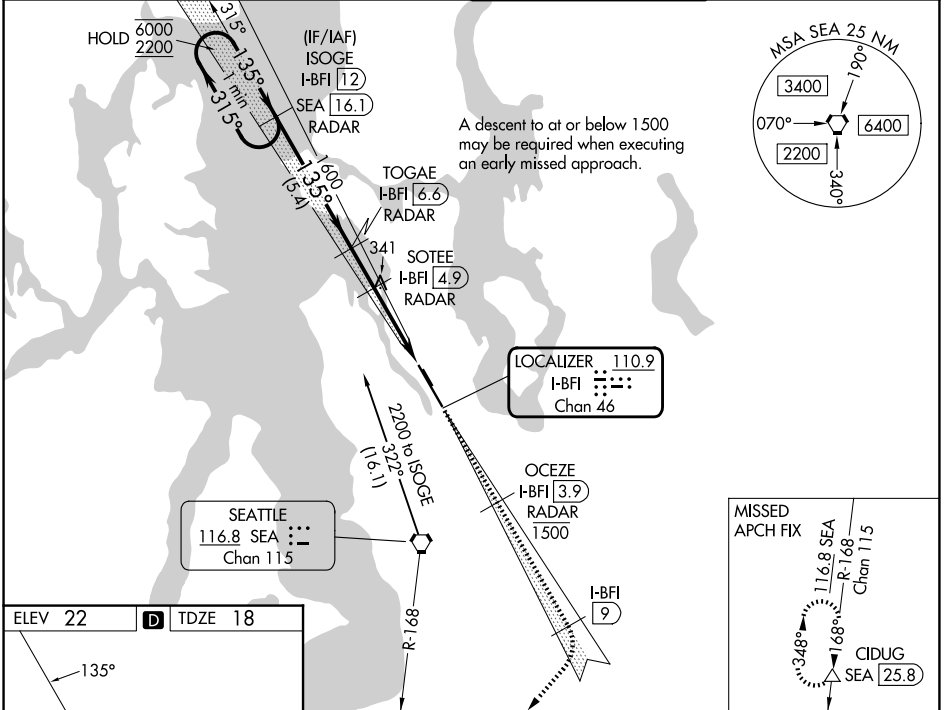
LOC/DME I-BFI <b>110.9</b> Chan <b>46</b>	APP CRS <b>135°</b>	Rwy Ldg <b>9120</b> TDZE <b>18</b> Apt Elev <b>22</b>
---	------------------------	---

# ILS or LOC RWY 14R

BOEING FLD/KING COUNTY INTL (BFI)

DME and RADAR required.		MALSF	MISSED APPROACH: Climb on I-BFI SE course to cross OCEZE/I-BFI 3.9 DME/RADAR at or below 1500 then climb on I-BFI SE course to I-BFI 9 DME then right turn on heading 206° and on SEA R-168 to 5000 to CIDUG/SEA 25.8 DME and hold.
<p>⚠ Circling NA for Cats C and D northeast of Rwy 14L-32R.</p> <p>⚠ Circling Rwy 32R NA at night. Rwy 14R helicopter visibility reduction below RVR 4000 NA. For inop ALS, increase S-ILS 14R all Cats to RVR 4500. S-ILS 14R* minimums NA when VGSI inop.</p>			

ATIS <b>127.75</b>	SEATTLE APP CON <b>125.9 306.9</b>	BOEING TOWER <b>120.6 257.8</b>	GND CON <b>121.9</b>
-----------------------	---------------------------------------	------------------------------------	-------------------------



Use I-BFI DME when on the localizer course.	↑ ISOGE I-BFI 12	↑ I-BFI SE crs 1500	↑ OCEZE I-BFI 3.9	↑ I-BFI SE crs 9	5000 SEA R-168	CIDUG SEA 25.8
One Minute Holding Pattern	SEA 16.1 RADAR	TOGAE I-BFI 6.6 RADAR	VGSI and ILS glidepath not coincident (VGSI Angle 3.00/TCH 55).			
6000 ← 315°	135° →	1600	1080	1600	1080	1080
GS 3.00°	TCH 39					
		5.4 NM	1.6 NM	1.6 NM	1.7 NM	

CATEGORY	A	B	C	D
S-ILS 14R*	308/40 290 (300-¾)			
S-LOC 14R	600/40	582 (600-¾)	600-1 ⅓	582 (600-1 ⅓)
CIRCLING	760-1	880-1 ¼	960-2 ¾	960-3
	738 (800-1)	858 (900-1 ¼)	938 (1000-2 ¾)	938 (1000-3)

NW-1, 11 JUN 2026 to 09 JUL 2026

NW-1, 11 JUN 2026 to 09 JUL 2026