

LOC/DME I-CHJ 110.9 Chan 46	APP CRS 315°	Rwy Ldg 9120 TDZE 22 Apt Elev 22
---	------------------------	---

ILS or LOC RWY 32L

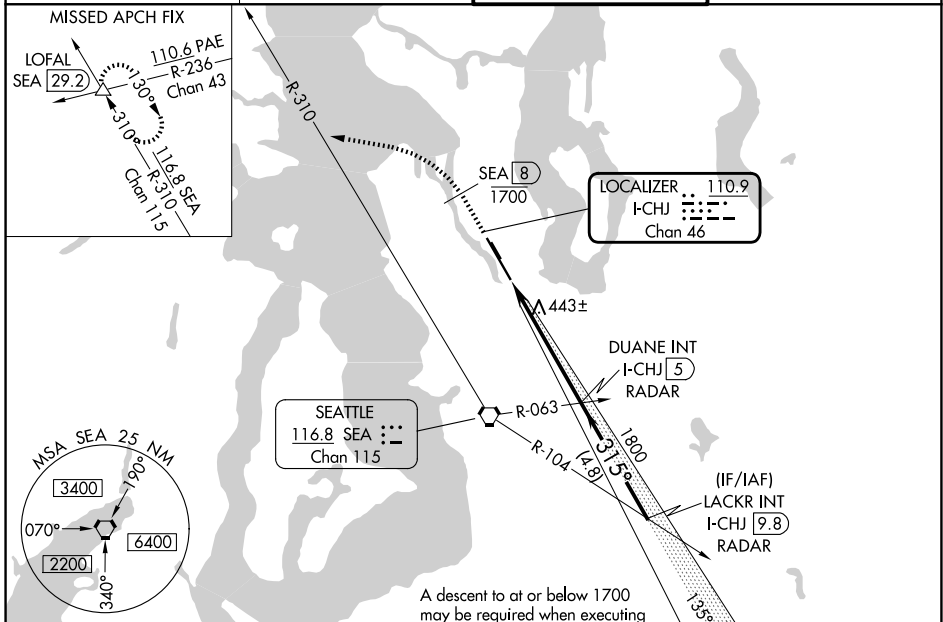
BOEING FLD/KING COUNTY INTL (BFI)

DME and RADAR required.

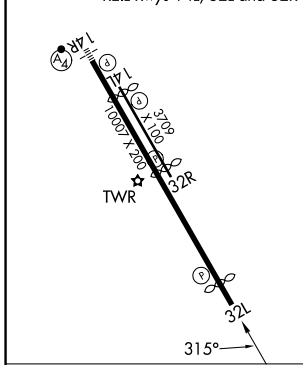
⚠ Circling NA for Cats C and D northeast of Rwy 14L-32R.
⚠ Circling Rwy 32R NA at night. Rwy 32L helicopter visibility reduction below ¾ SM NA.

MISSED APPROACH: Climb on heading 315° to cross SEA 8 DME at or below 1700, then climbing left turn to 6000 on heading 265° and on SEA R-310 to LOFAL INT/SEA 29.2 DME and hold, continue climb-in-hold to 6000.

ATIS 127.75	SEATTLE APP CON 125.9 306.9	BOEING TOWER 120.6 257.8	GND CON 121.9
-----------------------	---------------------------------------	------------------------------------	-------------------------



ELEV 22	D TDZE 22
MIRL Rwy 14L-32R HIRL Rwy 14R-32L REIL Rws 14L, 32L and 32R	



CATEGORY	A	B	C	D
S-ILS 32L	453-1¼ 431 (500-1¼)			
S-LOC 32L	700-1 678 (700-1)		700-1⅞ 678 (700-1⅞)	
CIRCLING	760-1 738 (800-1)	880-1¼ 858 (900-1¼)	960-2¾ 938 (1000-2¾)	960-3 938 (1000-3)

FAF to MAP 5.3 NM					
Knots	60	90	120	150	180
Min:Sec	5:18	3:32	2:39	2:07	1:46

NW-1, 11 JUN 2026 to 09 JUL 2026

NW-1, 11 JUN 2026 to 09 JUL 2026