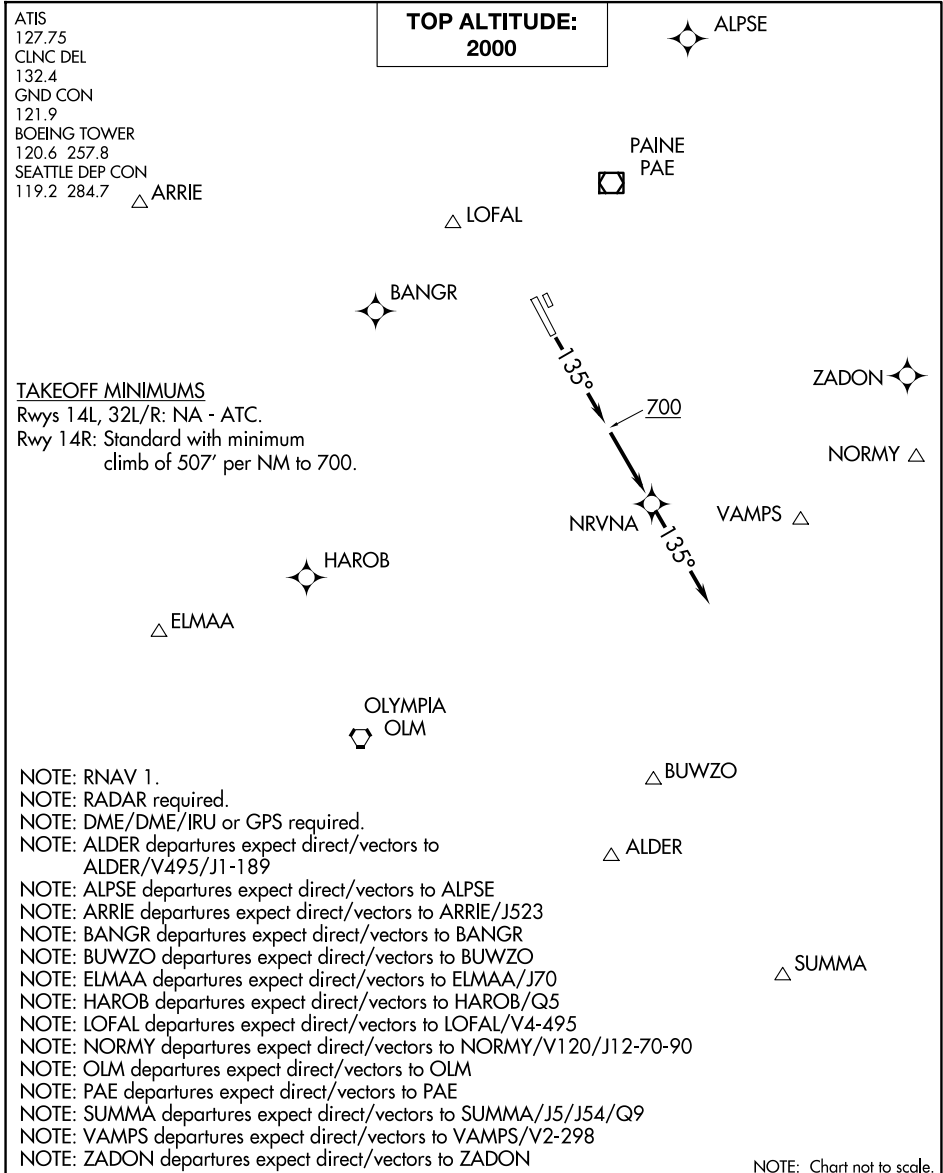


(NRVNA1.NRVNA) 23054

AL-384 (FAA)

BOEING FLD/KING COUNTY INTL (BFI)
SEATTLE, WASHINGTON

NRVNA ONE DEPARTURE (RNAV)



NW-1, 11 JUN 2026 to 09 JUL 2026

NW-1, 11 JUN 2026 to 09 JUL 2026

DEPARTURE ROUTE DESCRIPTION

TAKEOFF RUNWAY 14R: Climb heading 135° to 700, then direct NRVNA, then on track 135° for RADAR vectors to assigned route/fix, maintain 2000 or as assigned by ATC.
Expect clearance to filed altitude/flight level within three minutes after departure.

NRVNA ONE DEPARTURE (RNAV)
(NRVNA1.NRVNA) 12OCT17

SEATTLE, WASHINGTON
BOEING FLD/KING COUNTY INTL (BFI)