

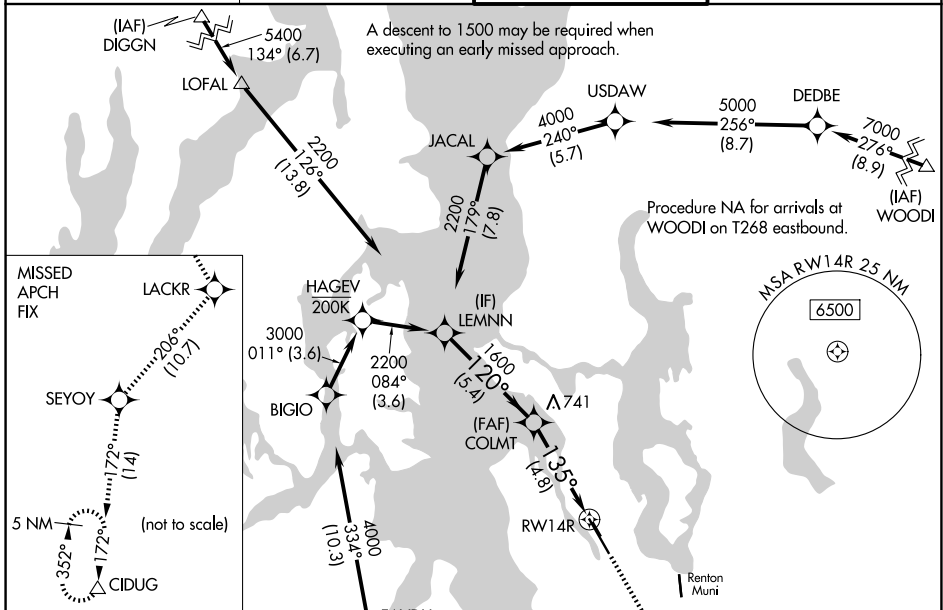
APP CRS	Rwy Ldg	9120
135°	TDZE	18
	Apt Elev	22

RNAV (RNP) Z RWY 14R

BOEING FLD/KING COUNTY INTL (BFI)

RNP AR APCH - GPS. Authorization required.	MALSF 	MISSED APPROACH: Climb direct OCEZE, cross OCEZE at 1500, then climb to 5000 on the RNAV missed approach route to CIDUG and hold.
RADAR required for missed approach.		
▽ For uncompensated Baro-VNAV systems, procedure NA below -6°C or above 54°C. For inop ALS, increase RNP 0.15 visibility to 1 3/8 SM.		

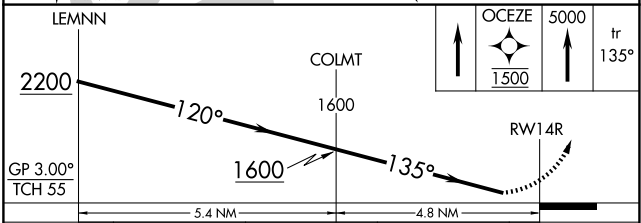
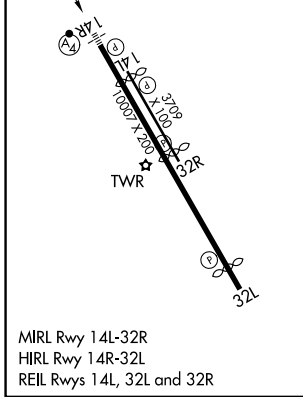
ATIS 127.75	SEATTLE APP CON 125.9 306.9	BOEING TOWER 120.6 257.8	GND CON 121.9
-----------------------	---------------------------------------	------------------------------------	-------------------------



NW-1, 11 JUN 2026 to 09 JUL 2026

NW-1, 11 JUN 2026 to 09 JUL 2026

ELEV 22	D	TDZE 18
---------	----------	---------



CATEGORY	A	B	C	D
RNP 0.10 DA		448/50	430 (500-1)	
RNP 0.15 DA		522-1 1/4	504 (500-1 1/4)	
RNP 0.30 DA		708-1 3/4	690 (700-1 3/4)	

AUTHORIZATION REQUIRED