

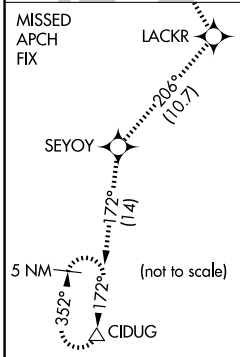
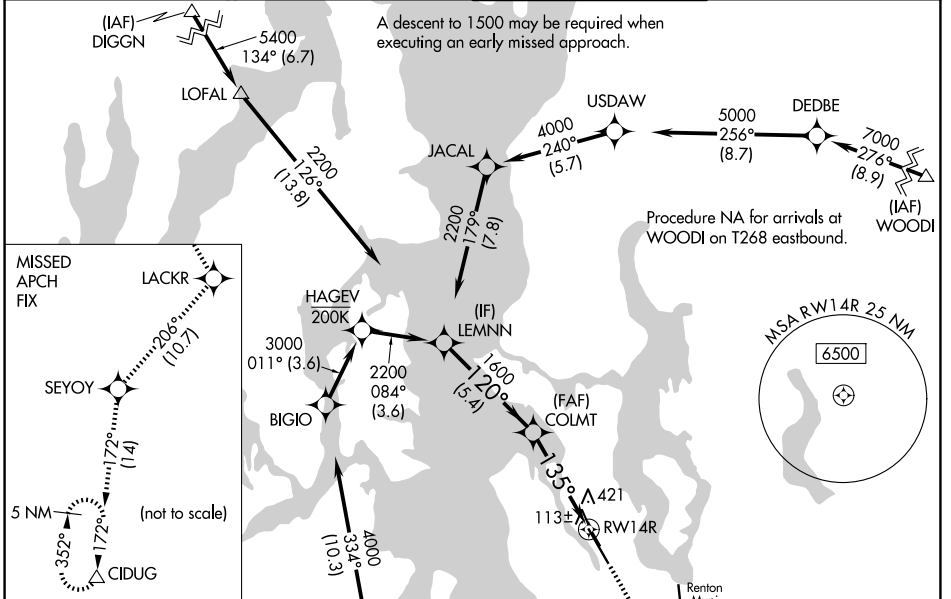
WAAS CH 92568 W14A	APP CRS 135°	Rwy Ldg TDZE Apt Elev	9120 18 22
--	------------------------	-----------------------------	---------------------------------------

RNAV (GPS) Y RWY 14R

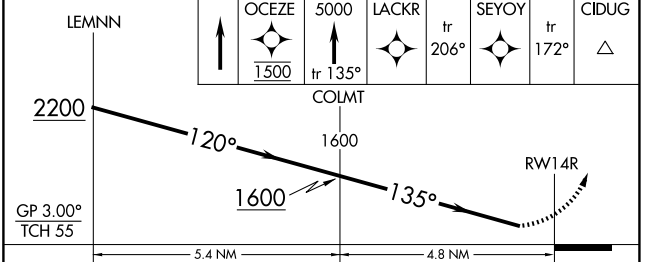
BOEING FLD/KING COUNTY INTL (BFI)

RNP APCH - GPS.	MALSF 	MISSED APPROACH: Climb direct OCEZE, cross OCEZE at 1500, then climb to 5000 on the RNAV missed approach route to CIDUG and hold.
RADAR required for missed approach.		
<p>▼ For uncompensated Baro-VNAV systems, LNAV/VNAV NA below -6°C or above 54°C. For inop ALS, increase LPV visibility to RVR 4500. Rwy 14R helicopter visibility reduction below RVR 4000 NA.</p>		

ATIS 127.75	SEATTLE APP CON 125.9 306.9	BOEING TOWER 120.6 257.8	GND CON 121.9
-----------------------	---------------------------------------	------------------------------------	-------------------------



ELEV 22	D	TDZE 18
---------	----------	---------



CATEGORY	A	B	C	D
LPV DA	301/40 283 (300-¾)			
LNAV/VNAV DA	744-1¾ 726 (800-1¾)			

MIRL Rwy 14L-32R
HIRL Rwy 14R-32L
REIL Rwy 14L, 32L and 32R

NW-1, 11 JUN 2026 to 09 JUL 2026

NW-1, 11 JUN 2026 to 09 JUL 2026