



WAAS CH 90205 W33A	APP CRS 329°	Rwy Ldg TDZE 165 Apt Elev 166	8014
--	------------------------	---	-------------

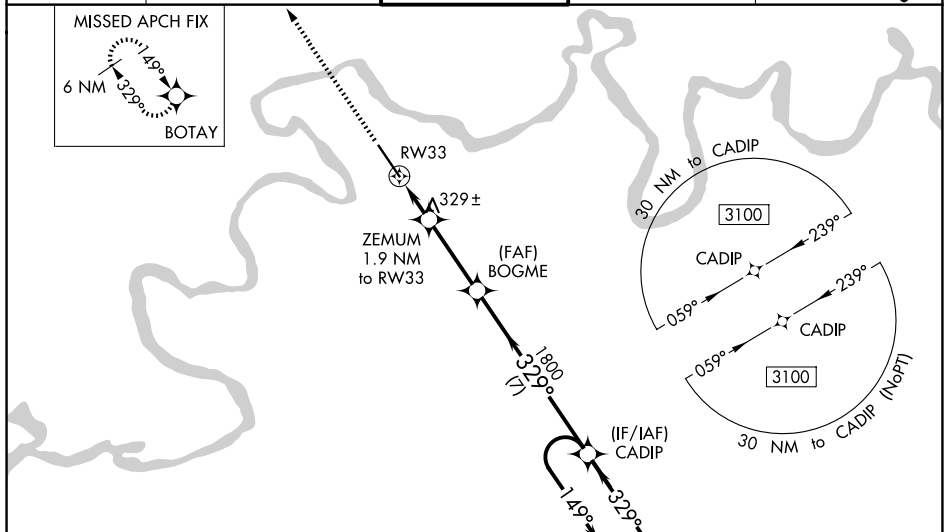
RNAV (GPS) RWY 33

CRAIG FLD (SEM)

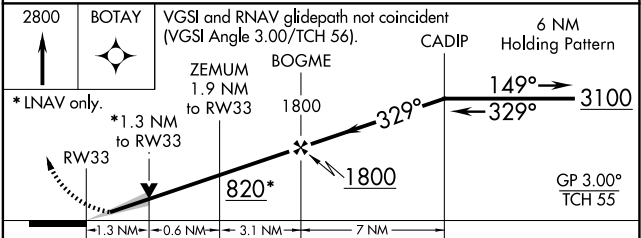
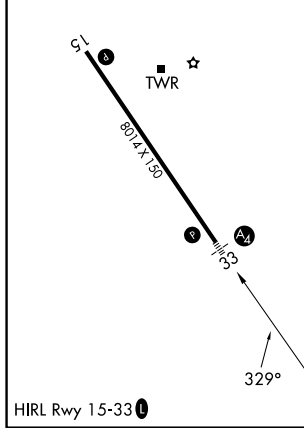
⚠ Baro-VNAV NA when using Montgomery altimeter setting. For uncompensated Baro-VNAV systems, LNAV/VNAV NA below -1.5°C (5°F) or above 54°C (130°F). For inoperative MALS, increase LNAV/VNAV all Cats visibility to ¾ mile and LNAV Cats C and D visibility to 1 ½ mile. DME/DME RNP-0.3 NA. VDP NA with Montgomery altimeter setting. When local altimeter setting not received, use Montgomery altimeter setting and increase all DA 78 feet, all MDA 80 feet, LNAV Cats C and D visibility ½ mile and increase Circling Cat C visibility ½ mile and Cat D visibility ¼ mile. For inoperative MALS, when using Montgomery altimeter setting, increase LPV all Cats visibility to ¾ mile, LNAV/VNAV all Cats visibility to 1 mile, LNAV Cat C and D visibility to 1 ½ mile.

MALS

MISSED APPROACH:
 Climb to 2800 direct BOTAY and hold.

AWOS-3PT 119.15	MONTGOMERY APP CON * 124.0 363.025	CRAIG TOWER* 120.85	GND CON 121.675	UNICOM 122.7 (CTAF) 
---------------------------	--	-------------------------------	---------------------------	---



ELEV 166	TDZE 165
-----------------	-----------------



CATEGORY	A	B	C	D
LPV DA		365-¾	200 (200-¾)	
LNAV/ DA VNAV		462-¾	297 (300-¾)	
LNAV MDA	580-¾	415 (500-¾)	580-1	415 (500-1)
CIRCLING	660-1 494 (500-1)	760-1 594 (600-1)	760-1½ 594 (600-1½)	1040-2¾ 874 (900-2¾)