

VOR/DME SHR	APP CRS	Rwy Ldg TDZE	8301
<b>113.55</b>	<b>131°</b>	4014	4014
Chan 82(Y)		Apt Elev	4021

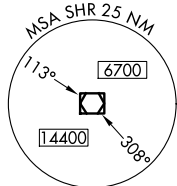
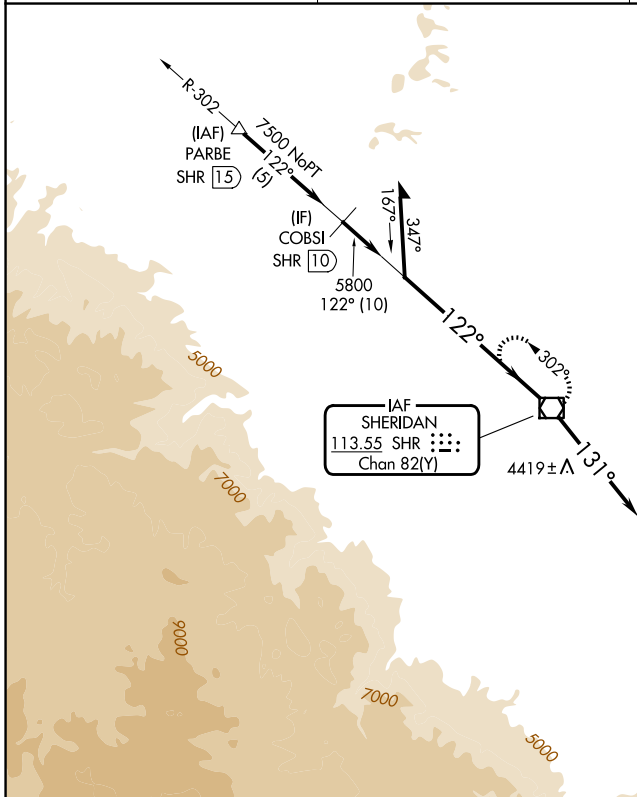
# VOR RWY 15

SHERIDAN COUNTY (SHR)

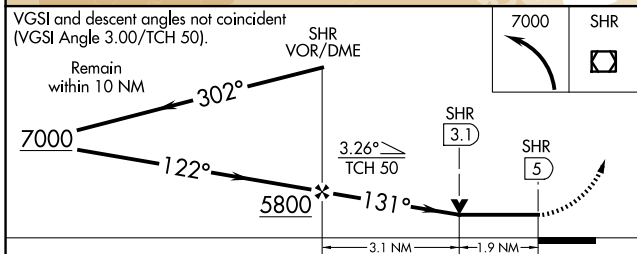
When local altimeter setting not received, procedure NA. Night landing: Rwy 24 NA.

MISSED APPROACH: Climbing left turn to 7000 direct SHR VOR/DME and hold, continue climb-in-hold to 7000.

ASOS <b>135,175</b>	SALT LAKE CENTER <b>127.75 351.9</b>	UNICOM <b>123.0</b> (CTAF) <b>1</b>
------------------------	---	--



IAF SHERIDAN  
113.55 SHR  
Chan 82(Y)



ELEV 4021	D	TDZE 4014
-----------	---	-----------

HIRL Rwy 15-33 **1**  
MIRL Rwy 6-24 **1**  
REIL Rws 6, 15, and 24 **1**

FAF to MAP 5 NM

Knots	60	90	120	150	180
Min:Sec	5:00	3:20	2:30	2:00	1:40

CATEGORY	A	B	C	D
S-15	4680-1 666 (700-1)		4680-1 $\frac{7}{8}$ 666 (700-1 $\frac{7}{8}$ )	
CIRCLING	4680-1 659 (700-1)		4860-2 $\frac{1}{2}$ 839 (900-2 $\frac{1}{2}$ )	5220-3 1199 (1200-3)

NW-1, 11 JUN 2026 to 09 JUL 2026

NW-1, 11 JUN 2026 to 09 JUL 2026