


LOC/DME I-SUX 109.3 Chan 30	APP CRS 313°	Rwy Ldg TDZE Apt Elev	9002 1096 1098
---	------------------------	-----------------------------	---

ILS or LOC RWY 31

SIoux GATEWAY/BRIG GENERAL BUD DAY FLD (SUX)

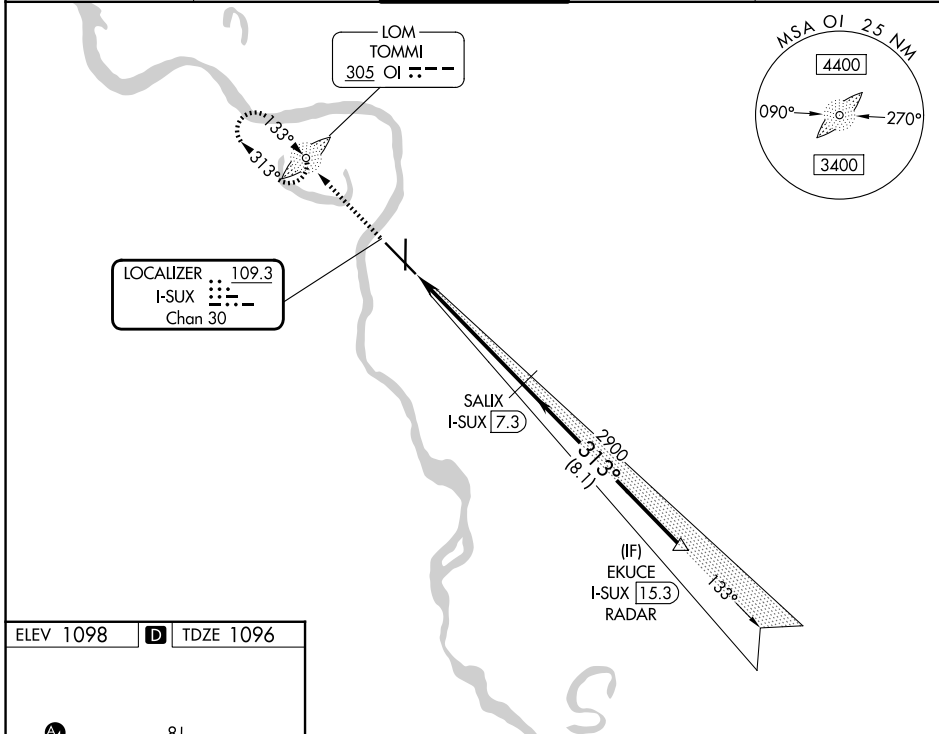
ADF required. DME required for LOC only. RADAR required for procedure entry.

⚠ Autopilot coupled approach NA below 2025 MSL. For inop ALS, increase S-ILS 31 Cat E visibility to RVR 4000 and S-LOC 31 Cat E to 1 1/2 SM.
*RVR 1800 authorized with use of FD or AP or HUD to DA.

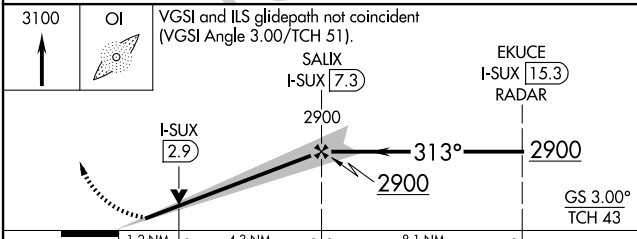
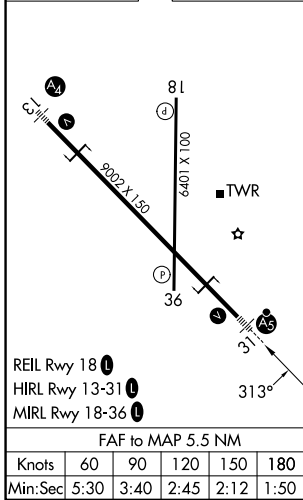
MALSR 

MISSED APPROACH: Climb to 3100 direct TOMMI LOM and hold, continue climb-in-hold to 3100.

ATIS 119.45 270.8	SIoux CITY APP CON * 124.6 307.0	SIoux CITY TOWER * 118.7 (CTAF) 0 254.3	GND CON 121.9 348.6	UNICOM 122.95
-----------------------------	--	---	-------------------------------	-------------------------



ELEV 1098 **D** TDZE 1096



CATEGORY	A	B	C	D	E
S-ILS 31*	1296/24 200 (200-1/2)				
S-LOC 31	1540/24	444 (500-1/2)	1540/45 444 (500-7/8)		
CIRCLING	1640-1 542 (600-1)	1700-1 602 (700-1)	1700-1 3/4 602 (700-1 3/4)	1860-2 1/2 762 (800-2 1/2)	1940-3 842 (900-3)

SIoux CITY, IOWA
Amdt 27 24MAR22

SIoux GATEWAY/BRIG GENERAL BUD DAY FLD (SUX)
42°24'N-96°23'W

ILS or LOC RWY 31

NC-3, 11 JUN 2026 to 09 JUL 2026

NC-3, 11 JUN 2026 to 09 JUL 2026