

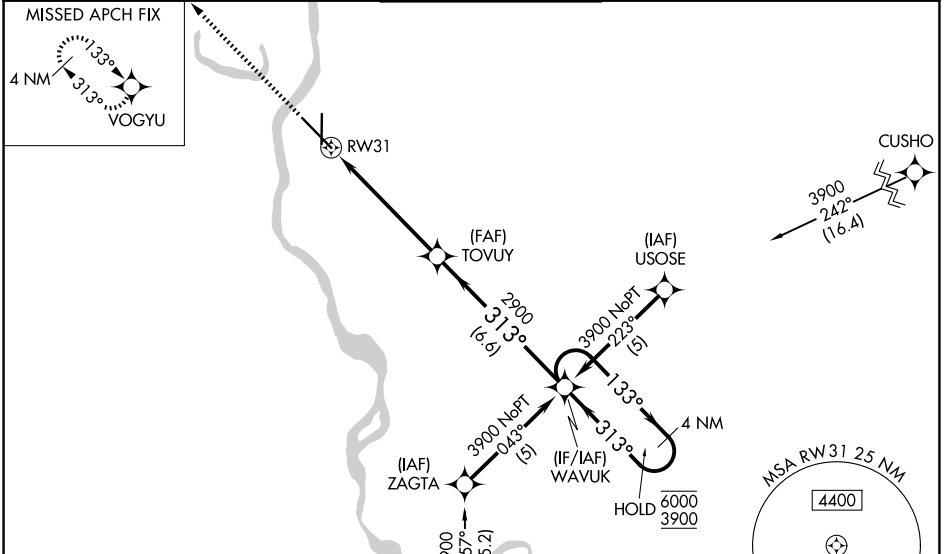
WAAS CH <b>90211</b> <b>W31A</b>	APP CRS <b>313°</b>	Rwy Ldg TDZE Apt Elev	<b>9002</b> <b>1096</b> <b>1098</b>
--	------------------------	-----------------------------	---

# RNAV (GPS) RWY 31

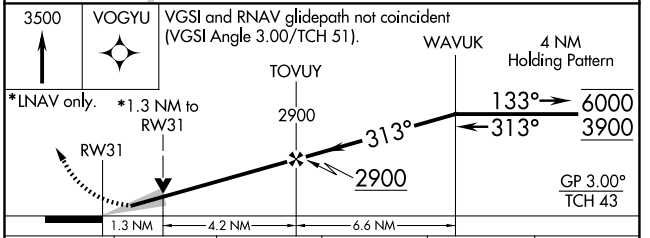
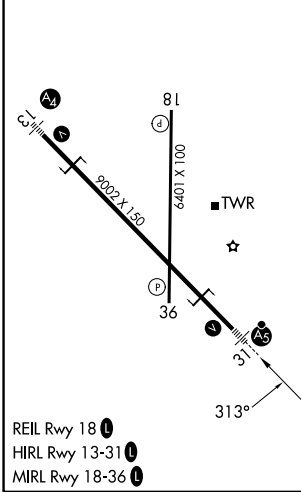
SIoux GATEWAY/BRIG GENERAL BUD DAY FLD (SUx)

RNP APCH-GPS.		MISSED APPROACH: Climb to 3500 direct VOGYU and hold.
For uncompensated Baro-VNAV systems, LNAV/VNAV NA below -21°C or above 54°C. For inop ALS increase LPV Cat E visibility to RVR 4000; increase LNAV/VNAV all Cats visibility to 1 3/8 SM and LNAV Cats C/D/E visibility to 1 3/8 SM. # RVR 1800 authorized with use of FD or AP or HUD to DA.		

ATIS <b>119.45 270.8</b>	SIoux CITY APP CON * <b>124.6 307.0</b>	SIoux CITY TOWER * <b>118.7 (CTAF) 0 254.3</b>	GND CON <b>121.9 348.6</b>	UNICOM <b>122.95</b>
-----------------------------	--	---	-------------------------------	-------------------------



ELEV 1098	<b>D</b>	TDZE 1096
-----------	----------	-----------



CATEGORY	A	B	C	D	E
LPV DA#	1296/24 200 (200-1/2)				
LNAV/VNAV DA	1596/50 500 (500-1)				
LNAV MDA	1560/24	464 (500-1/2)	1560/50	464 (500-1)	
CIRCLING	1640-1 542 (600-1)	1700-1 602 (700-1)	1700-1 3/4 602 (700-1 3/4)	1860-2 1/2 762 (800-2 1/2)	2000-3 902 (1000-3)

NC-3, 11 JUN 2026 to 09 JUL 2026

NC-3, 11 JUN 2026 to 09 JUL 2026