

SIoux FALLS, SOUTH DAKOTA

HI-ILS Z or LOC Z RWY 3

LOC I-FSD 109.9	APCH CRS 030°	Rwy Idg 8999
		TDZE 1424
		Arprt Elev 1430

[USAF]

JOE FOSS FLD (KFSD)

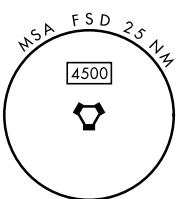
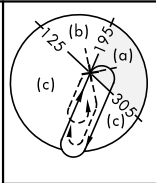
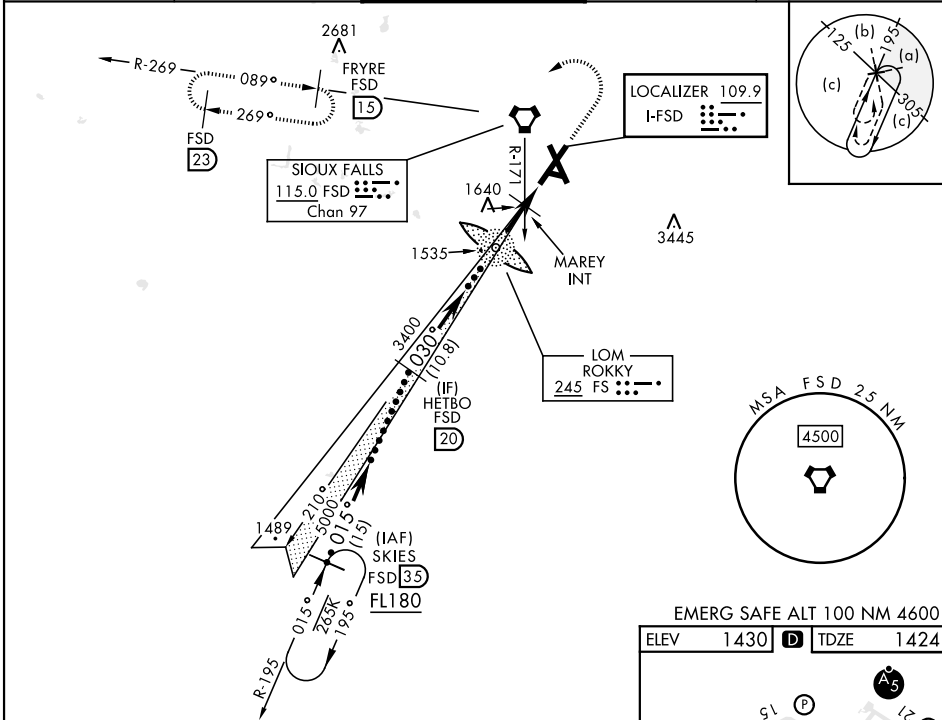
RADAR and DME required.

- ▲ * When ALS inop, increase CAT CDE RVR to 40, vis to ¼ mile.
- ** When ALS inop, increase CAT CDE vis to 1 ½ miles.
- *** When ALS inop, increase CAT CDE vis to 1 ½ miles.



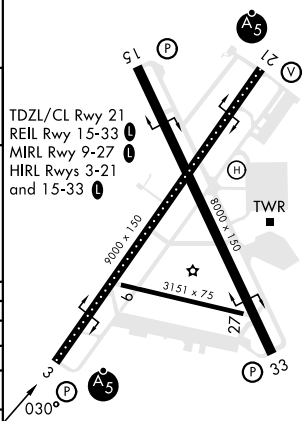
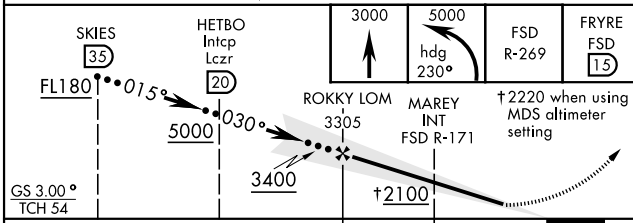
MISSED APPROACH: Climb to 3000, then climbing left turn to 5000 on heading 230° and FSD VORTAC R-269 to FRYRE (FSD 15 DME) and hold.

ATIS 126.6	SIoux FALLS APP CON 125.8 306.2	SIoux FALLS TOWER ★ 118.3(CTAF) 0 257.8	GND CON 121.9 348.6	ASR
----------------------	---	---	-------------------------------	-----



EMERG SAFE ALT 100 NM 4600

ELEV 1430	TDZE 1424
-----------	-----------



CATEGORY	C	D	E
S-ILS 3*	1674/24	250	(300-½)
S-LOC 3**	2100-1½ 676 (700-1½)	2100-1½ 676	(700-1½)
CIRCLING	2100-1½ 670 (700-1½)	2200-2½ 770 (800-2½)	2300-3 870 (900-3)
MAREY FIX MINIMUMS (DUAL VOR RECEIVERS REQUIRED)			
S-LOC 3***	1940/55	516	(600-1)
CIRCLING	2060-1¾ 630 (700-1¾)	2200-2½ 770 (800-2½)	2300-3 870 (900-3)

SIoux FALLS, SOUTH DAKOTA

43°35'N-96°45'W

JOE FOSS FLD (KFSD)

Amtd 10 07AUG25

HI-ILS Z or LOC Z RWY 3

NC-1, 11 JUN 2026 to 09 JUL 2026

NC-1, 11 JUN 2026 to 09 JUL 2026