

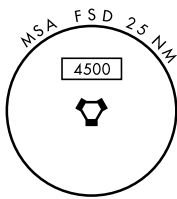
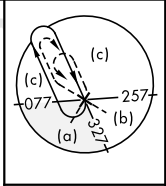
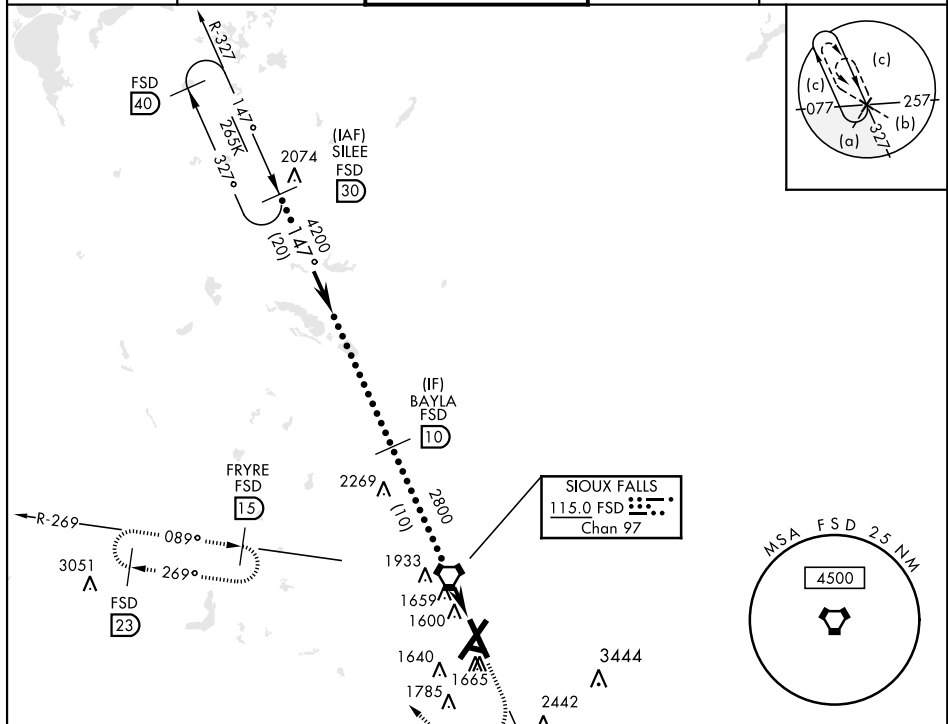
SIoux FALLS, SOUTH DAKOTA

HI-TACAN RWY 15

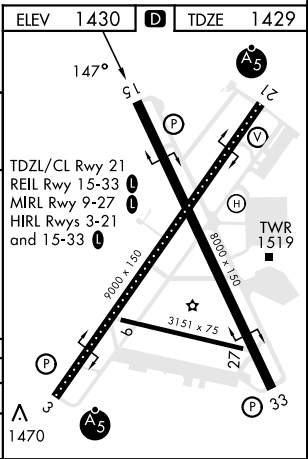
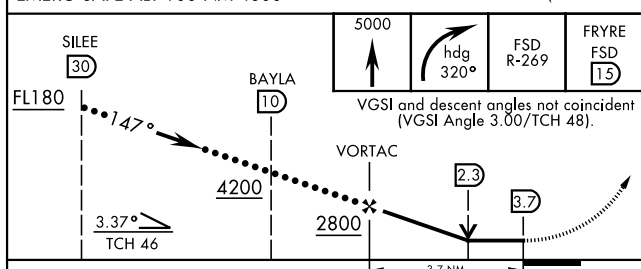
VORTAC FSD 115.0 Chan 97	APCH CRS 147°	Rwy Idg 8000 TDZE 1429 Arpt Elev 1430	AL-396 [USAF]	JOE FOSS FLD (KFSD)
--	-------------------------	--	---------------	---------------------

MISSED APPROACH: Climb to 5000 then right turn on heading 320° and FSD R-269 to FRYRE 15 DME and hold.

ATIS 126.6	SIoux FALLS APP CON 125.8 306.2	SIoux FALLS TOWER ★ 118.3(CTAF) 257.8	GND CON 121.9 348.6	ASR
----------------------	---	---	-------------------------------	-----



EMERG SAFE ALT 100 NM 4600



ELEV	1430	TDZE	1429
FL180	SILEE 30		
BAYLA 10	VORTAC		
FRYRE FSD 15	FSD R-269		
VGS and descent angles not coincident (VGS Angle 3.00/TCH 48).			
3.37°	3.7°	3.7 NM	
CATEGORY	C	D	E
S-15	1920-1 3/8	491 (500-1 3/8)	
CI RCLING	2060-1 3/4 630 (700-1 3/4)	2200-2 1/2 770 (800-2 1/2)	2300-3 870 (900-3)

SIoux FALLS, SOUTH DAKOTA 43° 35'N-96° 45'W JOE FOSS FLD (KFSD)
 Amdt 8C 04NOV21

HI-TACAN RWY 15

NC-1, 11 JUN 2026 to 09 JUL 2026

NC-1, 11 JUN 2026 to 09 JUL 2026